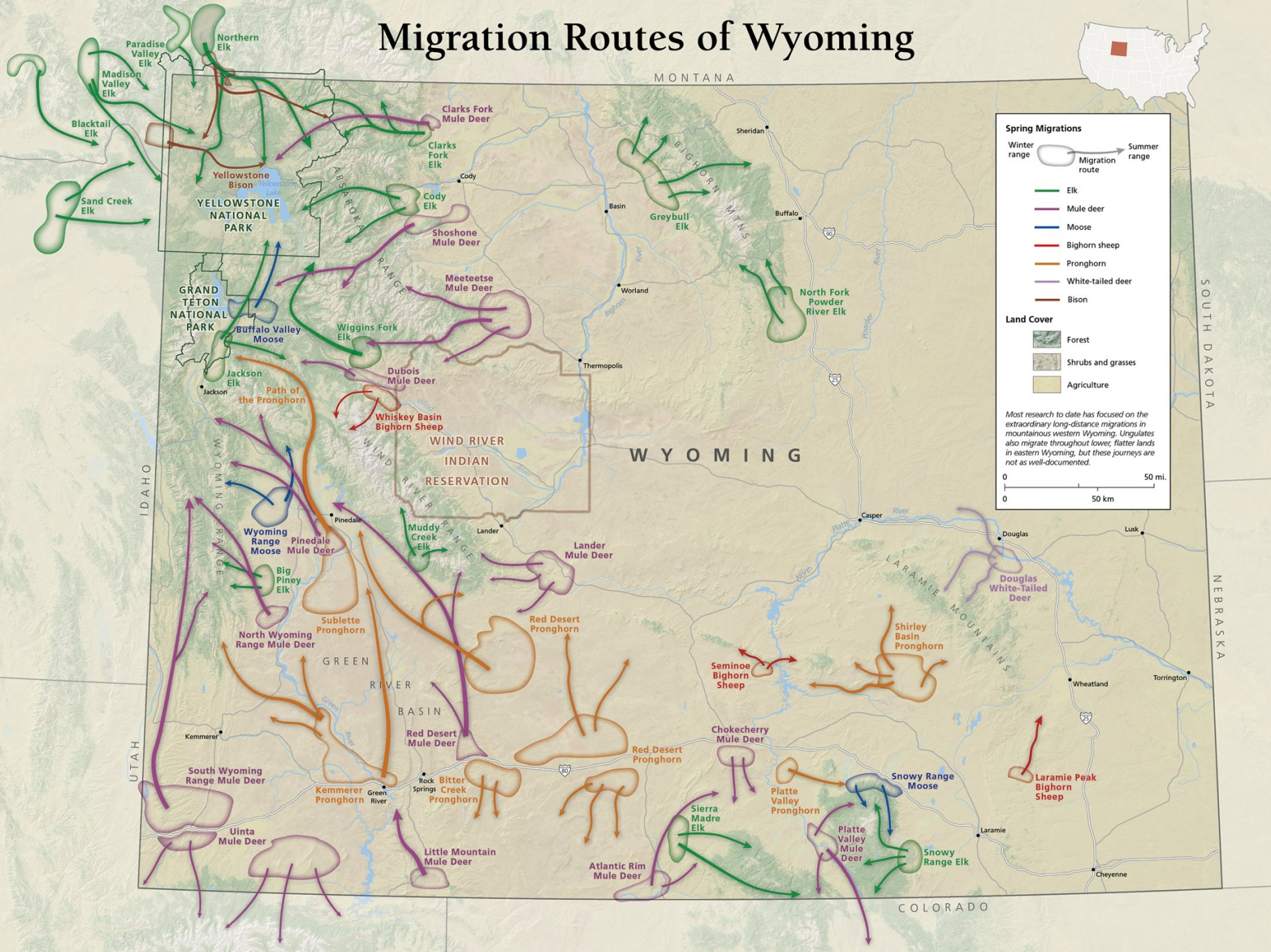




SEASONAL RANGE MAPPING IN WYOMING



Migration Routes of Wyoming



Spring Migrations

Winter range

Migration route

Summer range

Elk

Mule deer

Moose

Bighorn sheep

Pronghorn

White-tailed deer

Bison

Land Cover

Forest

Shrubs and grasses

Agriculture

Most research to date has focused on the extraordinary long-distance migrations in mountainous western Wyoming. Ungulates also migrate throughout lower, flatter lands in eastern Wyoming, but these journeys are not as well-documented.

050 mi.

050 km

Four Actions Identified

Migration Corridor Strategy

- Action 1**

Update the Mitigation Policy

- Action 2**

**Designate
Ungulate Migration Corridor**

- Action 3**

**Risk Assessments,
Research and Proactive
Actions**

- Action 4**

**WGFD Input on Federal
Surface Projects and Planning
Efforts**

Public and Stakeholder Outreach is Important to the Process

Secretarial Order 3362 and Wyoming



3-5 Priority Migration Corridors

- #1 Platte Valley mule deer
- #2 Wyoming Range mule deer
- #3 Dubois mule deer
- #4 Sublette mule deer
- #5 Baggs mule deer

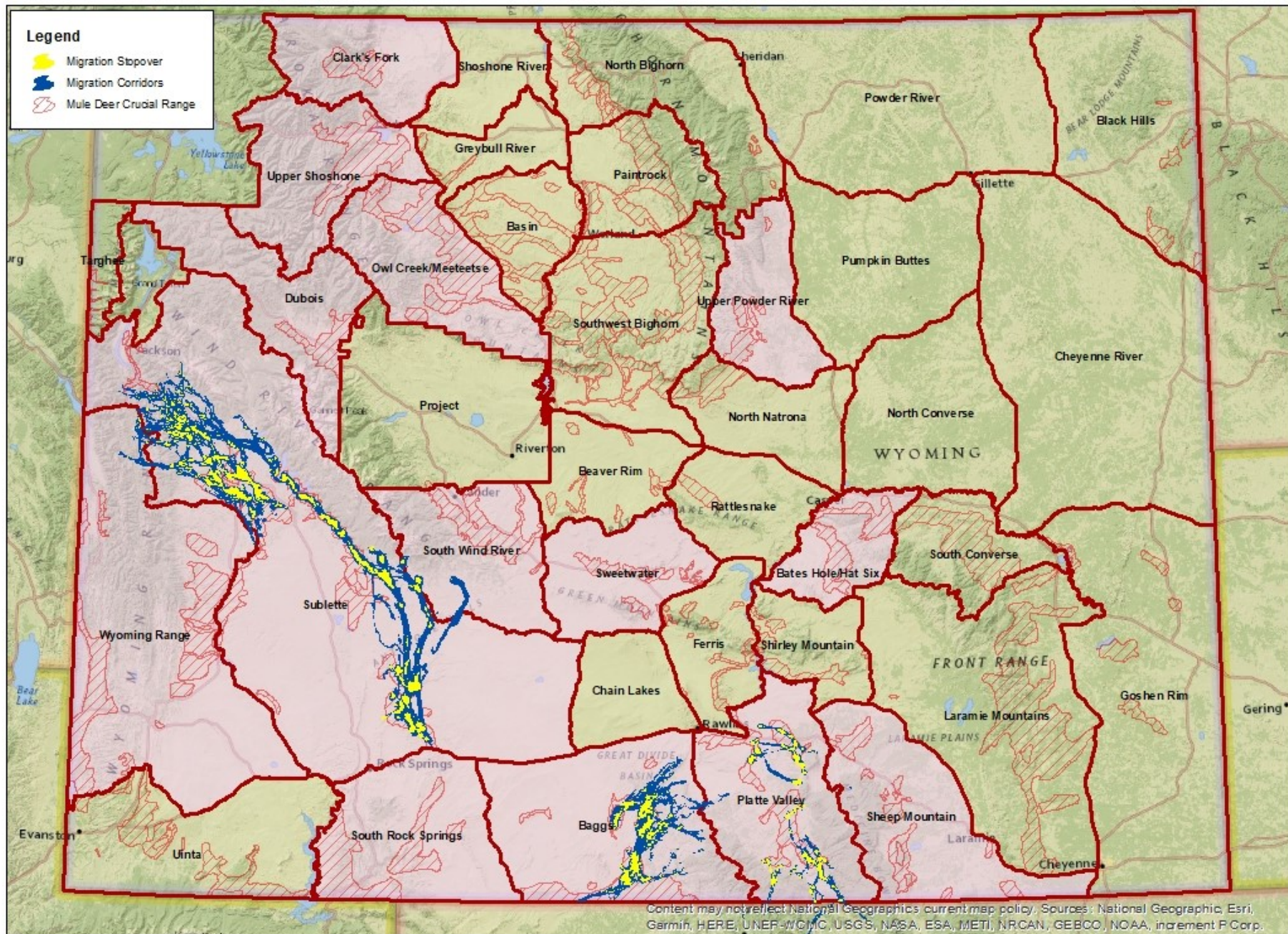
2-3 Research Priorities

- #1 Carter Mountain pronghorn
- #2 Powder River/Pumpkin Buttes mule deer
- #3 Sublette pronghorn

Wyoming Action Plan

- Interagency collaboration
- Habitat projects
- Conservation efforts
- WY Mule Deer Initiative

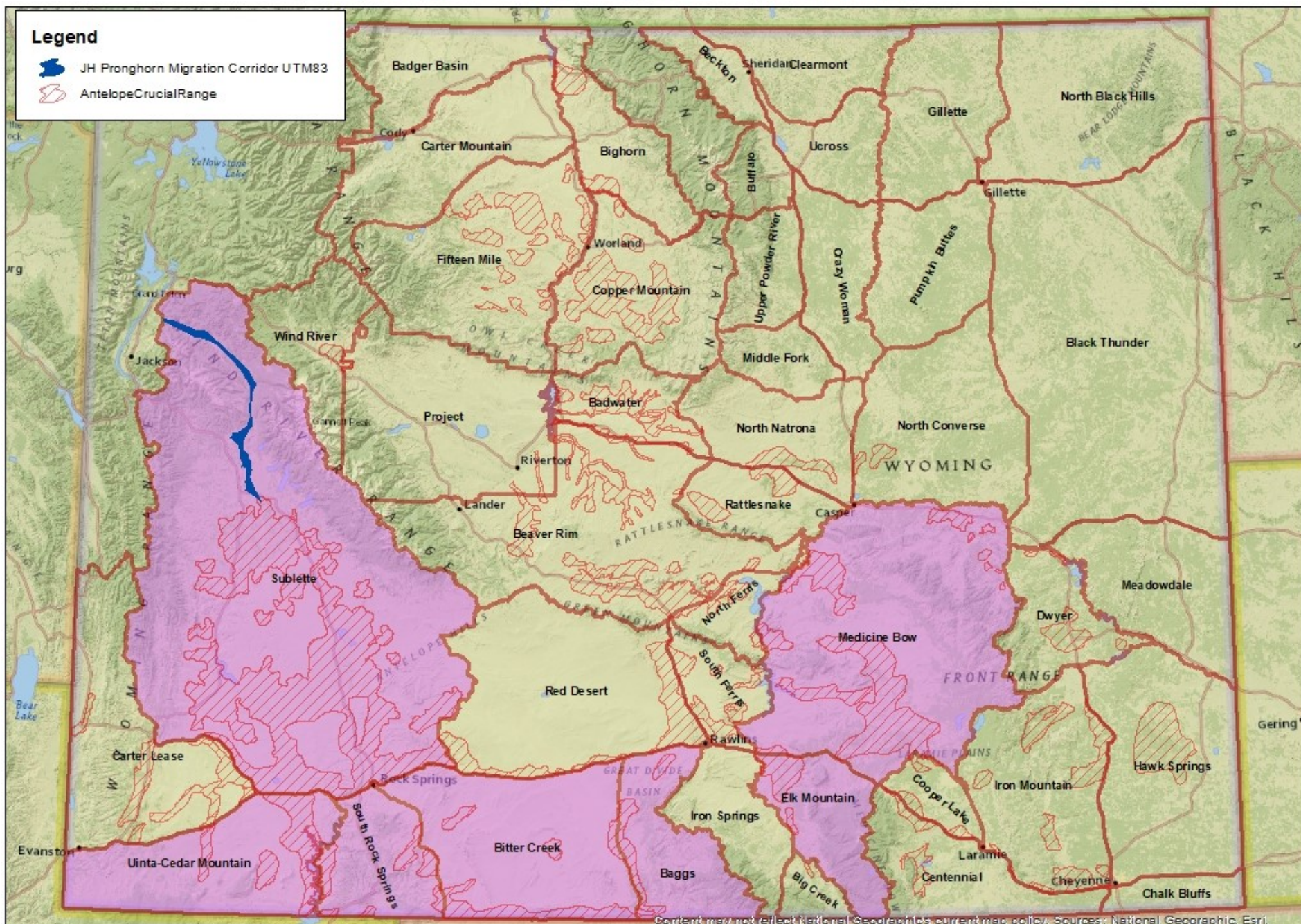
Wyoming Mule Deer GPS Collar Projects - WGFD Designated Migration Corridors/Stopover Areas & Crucial Range



Wyoming Pronghorn GPS Collar Projects & JH Migration Corridor

Legend

- JH Pronghorn Migration Corridor UTM83
- AntelopeCrucialRange



Baggs Mule Deer Migration Corridor

UPPER PLEISTOCENE
MAMMOTH KILL SITE

RIM

MAD

2563 m

2511 m

BROWNS HILL

2409 m

3354 m

2776 m

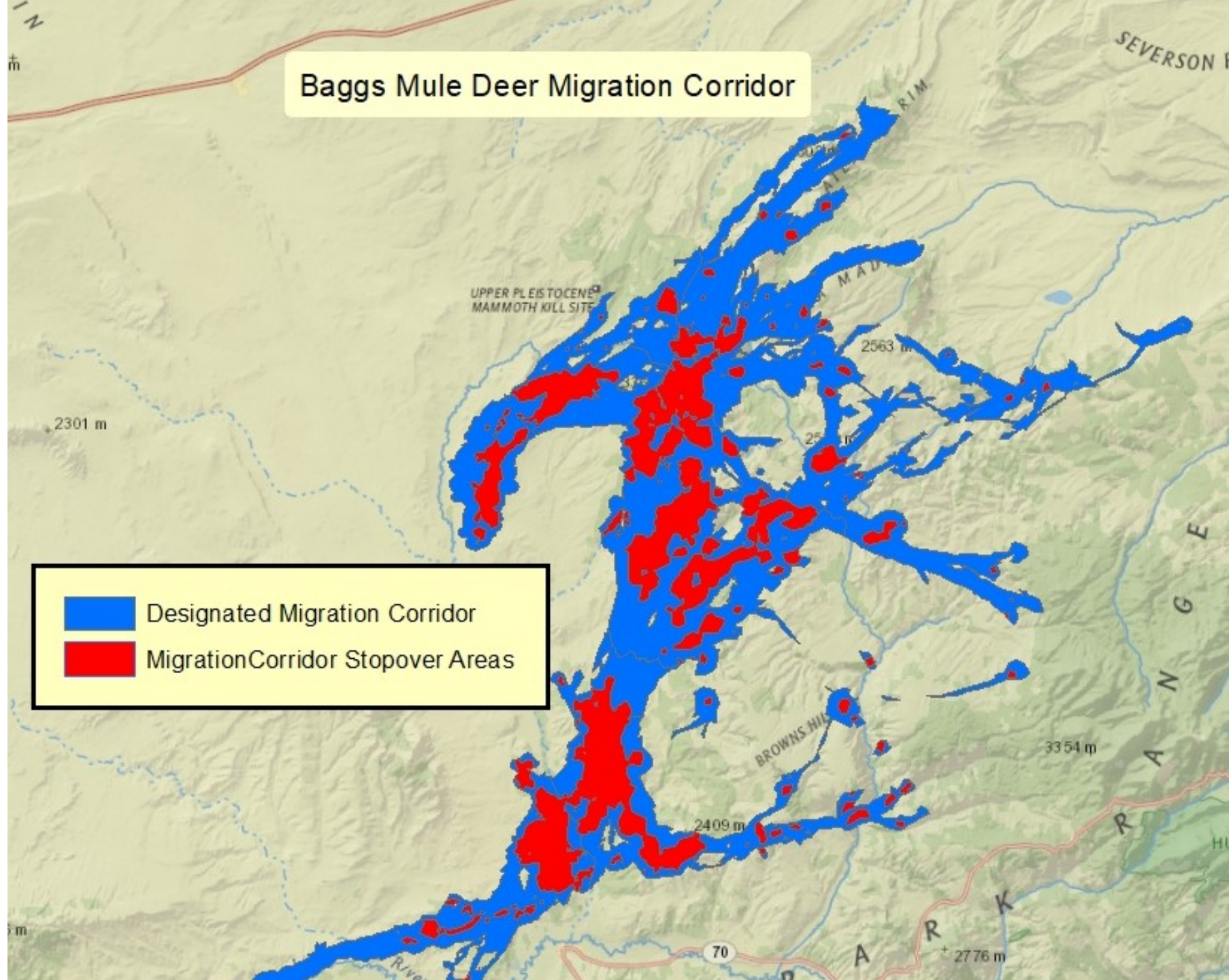
70

ARK

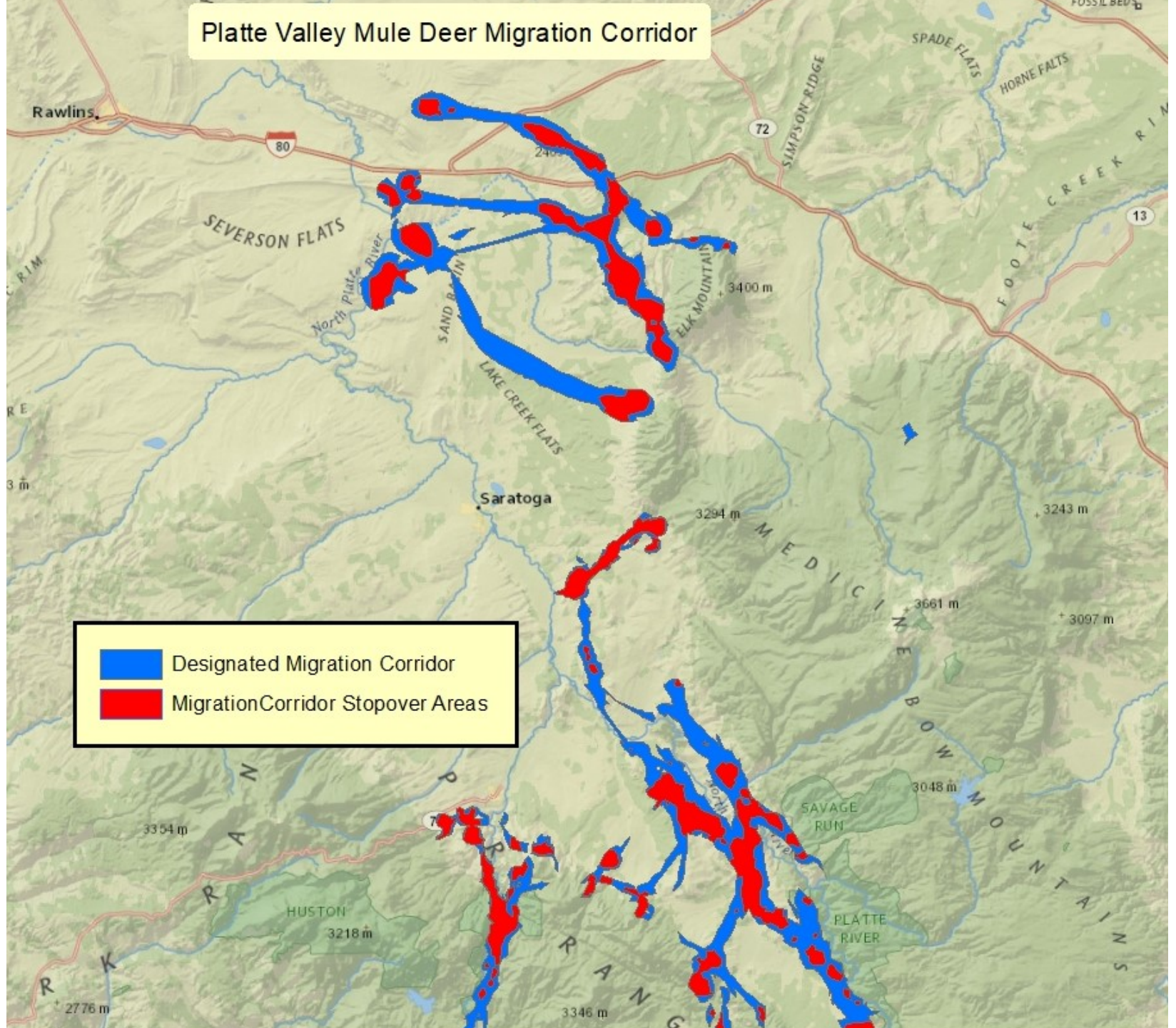
SEVERSON F

RANGE

- Designated Migration Corridor
- MigrationCorridor Stopover Areas



Platte Valley Mule Deer Migration Corridor



Sublette Mule Deer Migration Corridor

