



FOREST SERVICE PERSPECTIVE

GREATER YELLOWSTONE AREA TRANSPORTATION NEEDS ASSESSMENT WORKSHOP

Brenda Christensen

April 3, 2018

Caring for the Land and Serving the People

~Forest Service Motto



To sustain the health,
diversity, and productivity of
the Nation's forests and
grasslands to meet the
needs of present and future
generations.

~Forest Service Mission



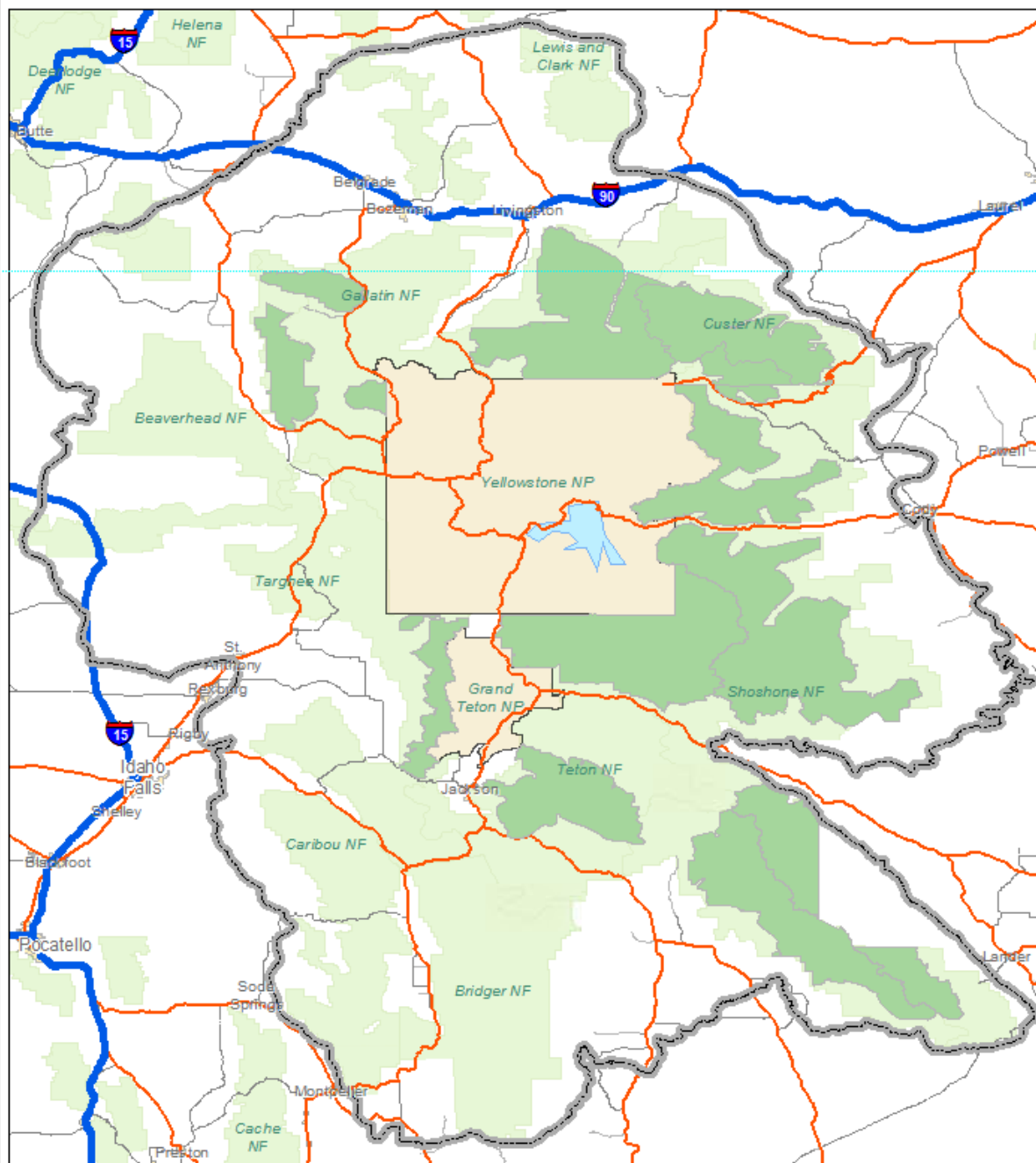
"to provide the greatest
amount of good for the
greatest amount of people in
the long run."

~Gifford Pinchot, first Chief



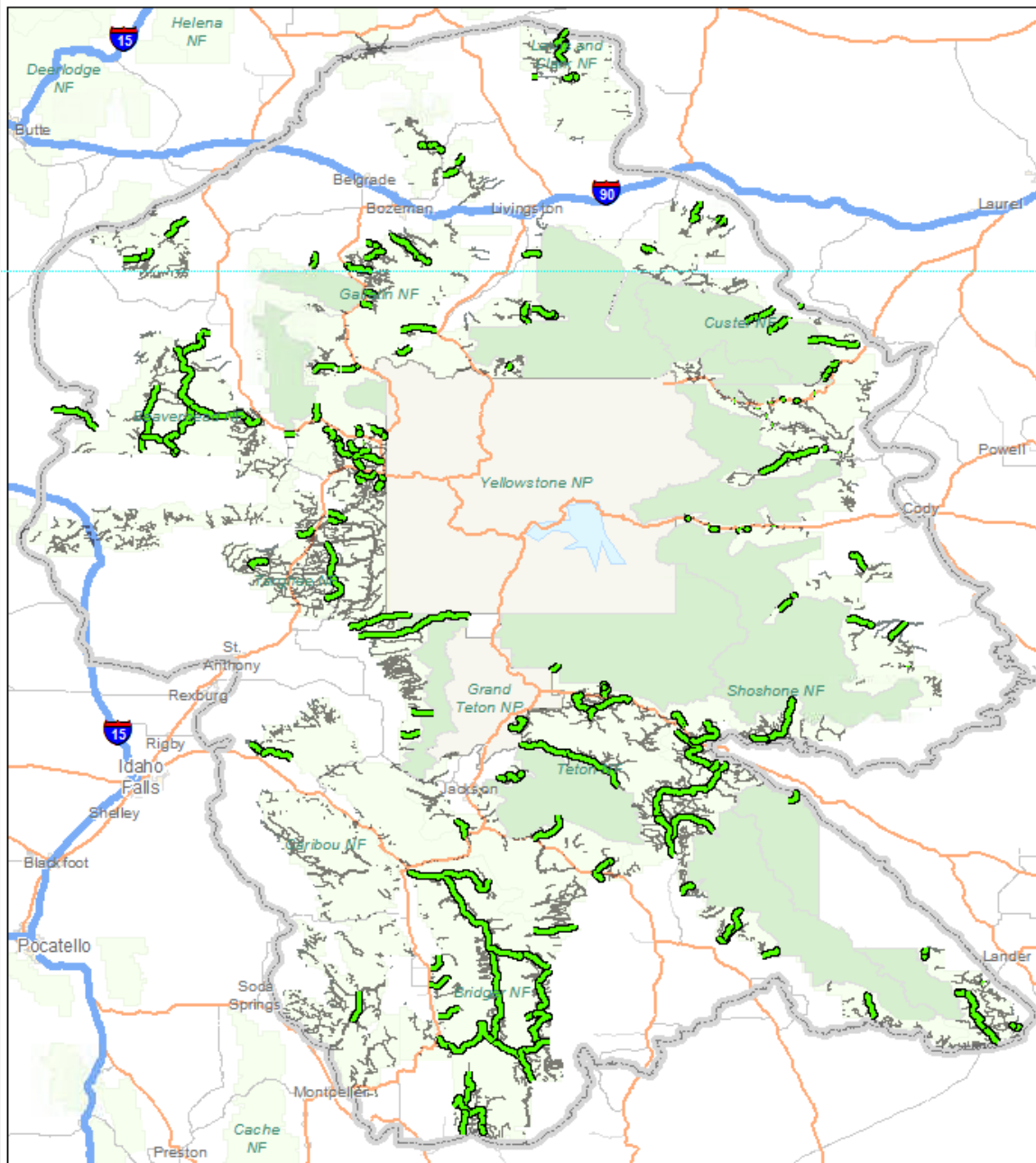
Transportation Objectives

- Provide access for the administration, utilization, and protection of NFS lands
- Provide safe and efficient travel
- Sustainable access in a fiscally responsible manner consistent with land management plan
- Manage within the environmental capabilities of the land
- Provide an appropriate range of recreation opportunities and minimize conflicts



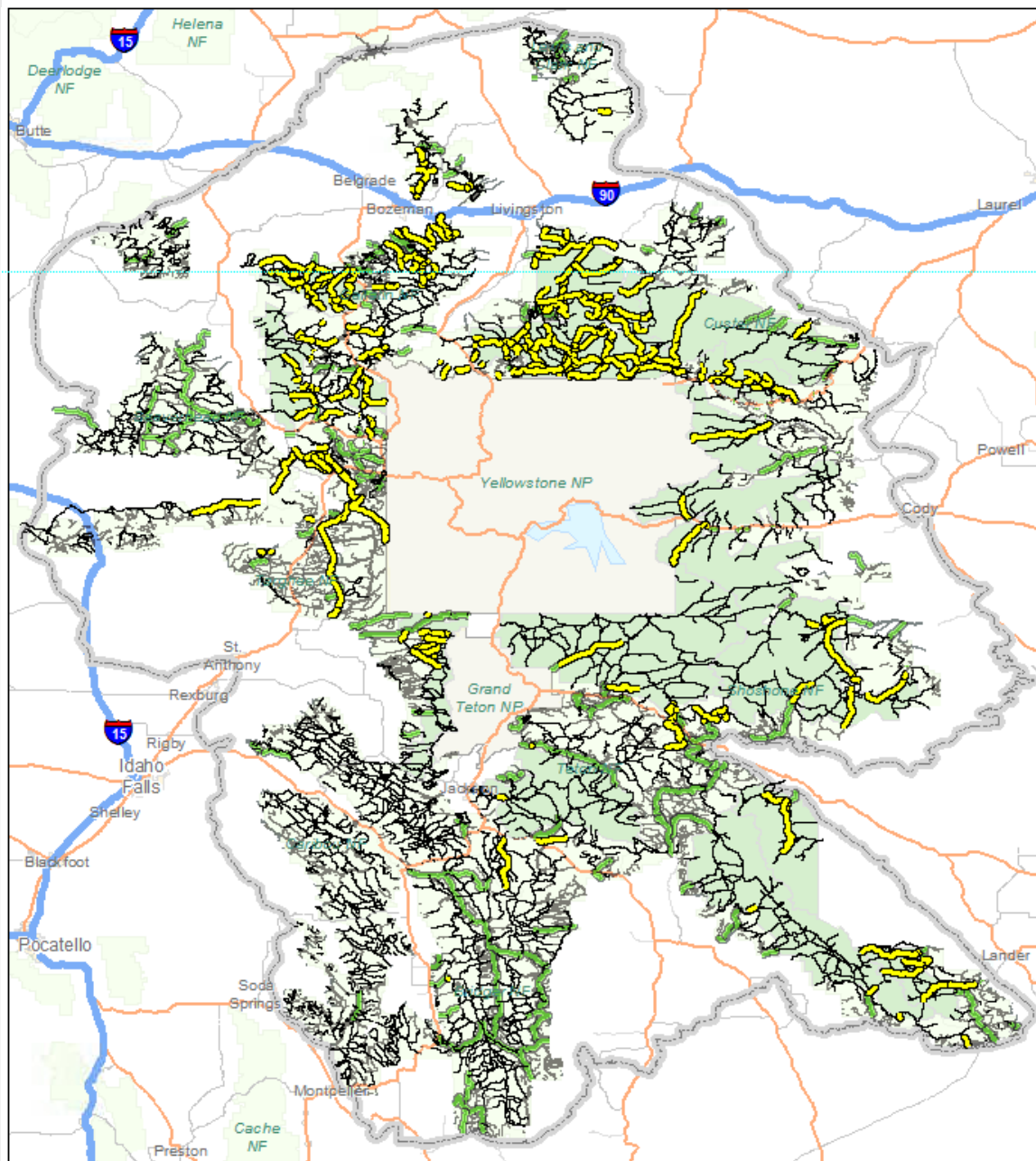
49%
NFS Lands

36% of the
NFS Land is
managed as
Wilderness



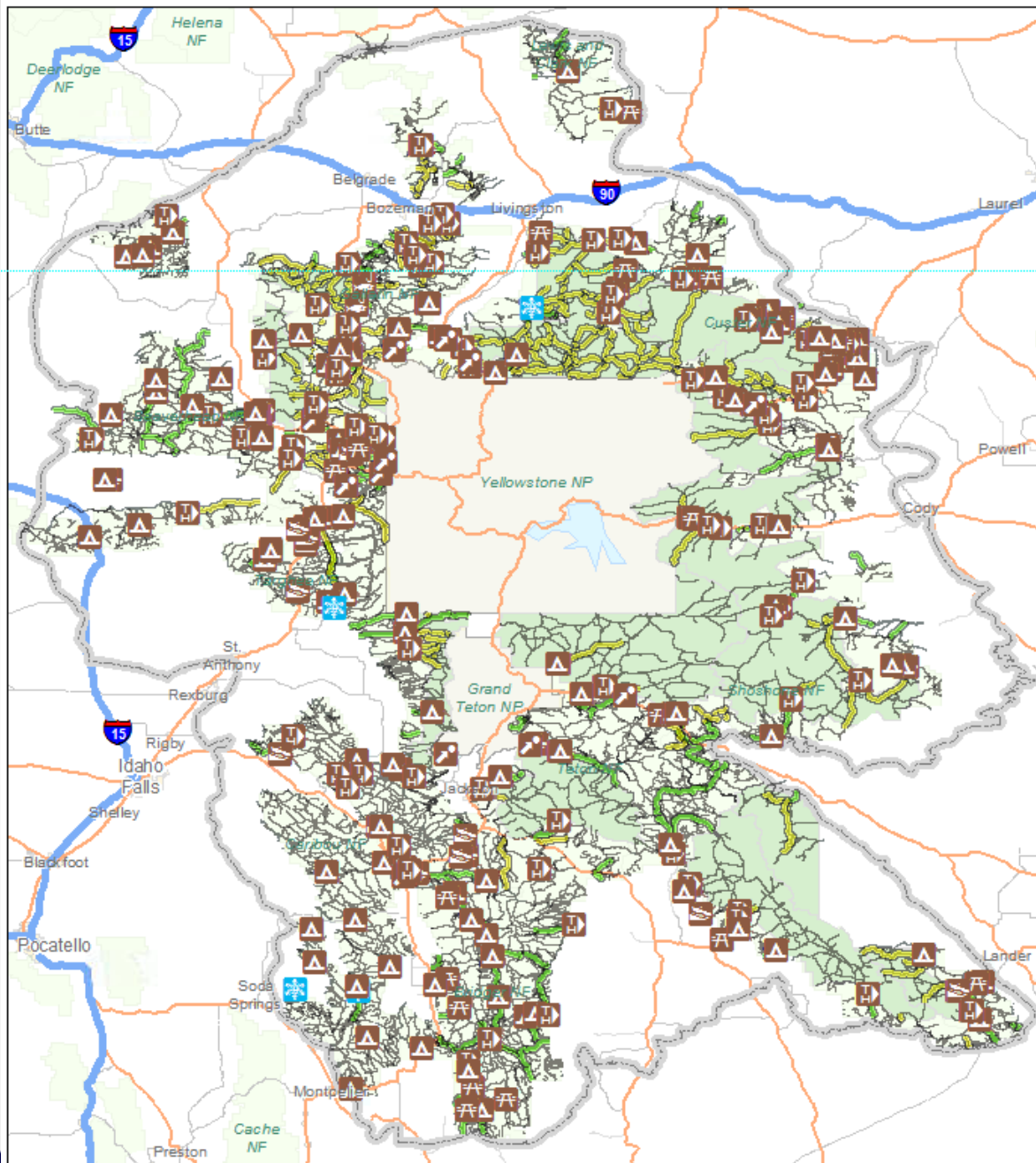
> 7300 miles
Road

~1000 miles
FLTP



> 9500 miles
Trail

~1300 miles
FLTP



> 3000
Recreation
Sites

~1250
Developed
Sites



- 7 Million Visitors
- Over 63% of visitors travel < 50 miles
- 80% of visitors travel < 100 miles.
- 25% Employment related to Travel and Tourism > national average of 15%



Needs being met

Scale 1 to 10



Programs

- Federal Lands and Tribal Transportation Program (FLTTP).
 - Federal Land Access Program
 - Federal Lands Transportation Program
- Partnerships with
 - States
 - Counties
 - Outfitter-guides
 - Concessionaires
 - Local User Groups





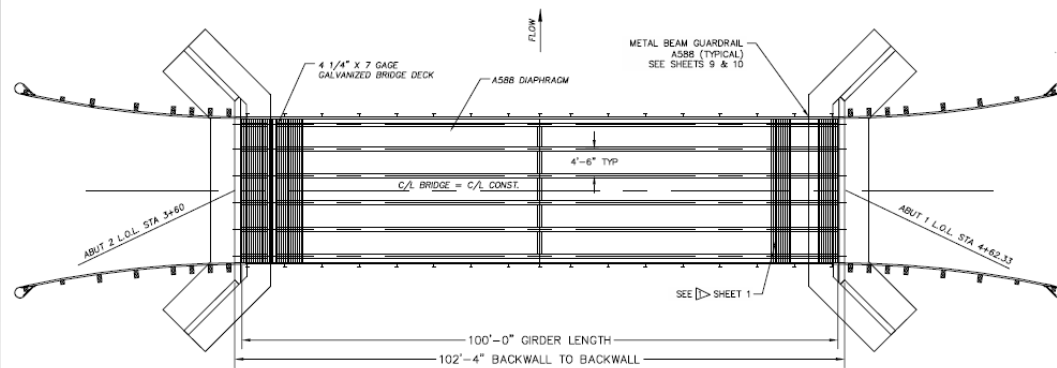
Main Boulder
MT - FLAP



Beartooth Hwy
WY - FLAP



Gros Ventre Road
WY - FLAP



BRIDGE LAYOUT

Crystal Creek Bridge R4 - FLTP



Hyalite Canyon Rd R1 - FLTP



Louis Lake Rd R2 - FLTP

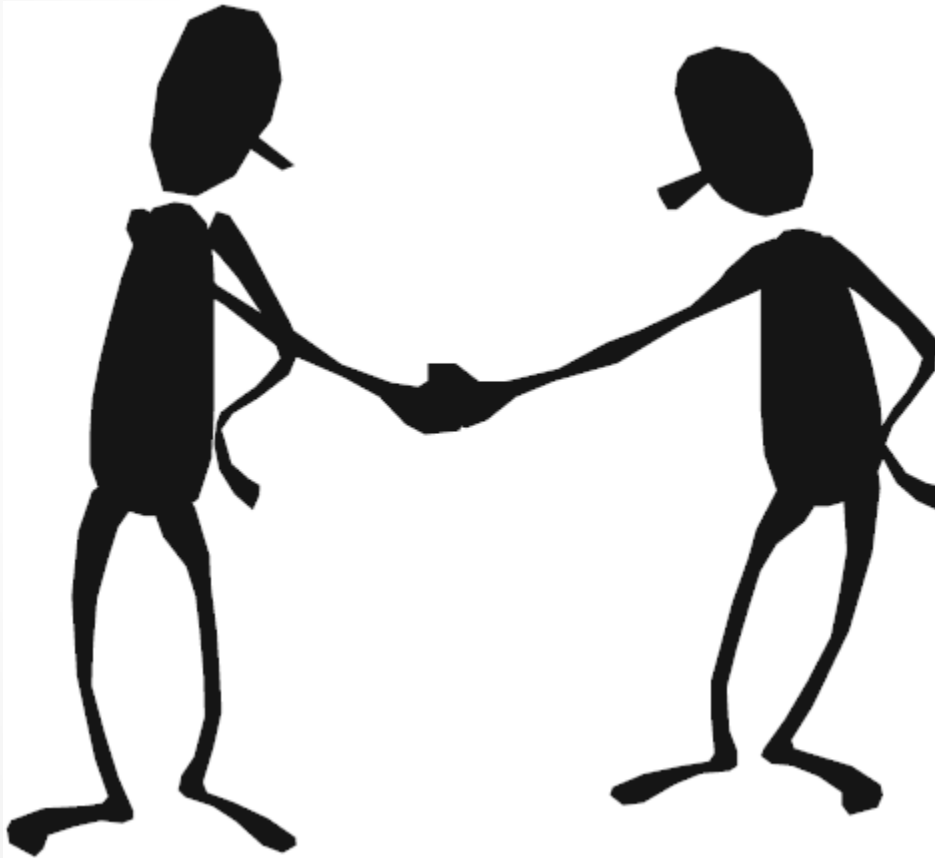
Greatest Concerns for FS



- Increased overflow and pass-thru visitation
- Change in use from designed use due to a different type of user
- Infrastructure O&M funding source



Partnership



When

- **Safety and Waste management**
 - Imminently (short term)
- **Manage Overflow/Pass Through**
 - Within the next 3-5 years
- **Continue improvements and preventive maintenance**
 - Within the next 10-20 years