

# GYCC FIRE MANAGEMENT SUBCOMMITTEE

## CODY PUBLIC MEETING



# GYCC FIRE MANAGEMENT SUBCOMMITTEE

## EARLY HISTORY AND MISSION

Formed following the **1988** wildfires and subsequent fire management policy review initiated by the Secretaries of Agriculture and Interior.

- Initial purpose was to improve interagency wildfire coordination
- Emphasis was on Wilderness and National Park wildfires
- First Greater Yellowstone Planning and Coordination Guide was published in **1990**
- Comprised of forest and park Fire Management Officers
- Membership was **USFS and NPS**

# GYCC FIRE MANAGEMENT SUBCOMMITTEE

## MODERN HISTORY AND MISSION

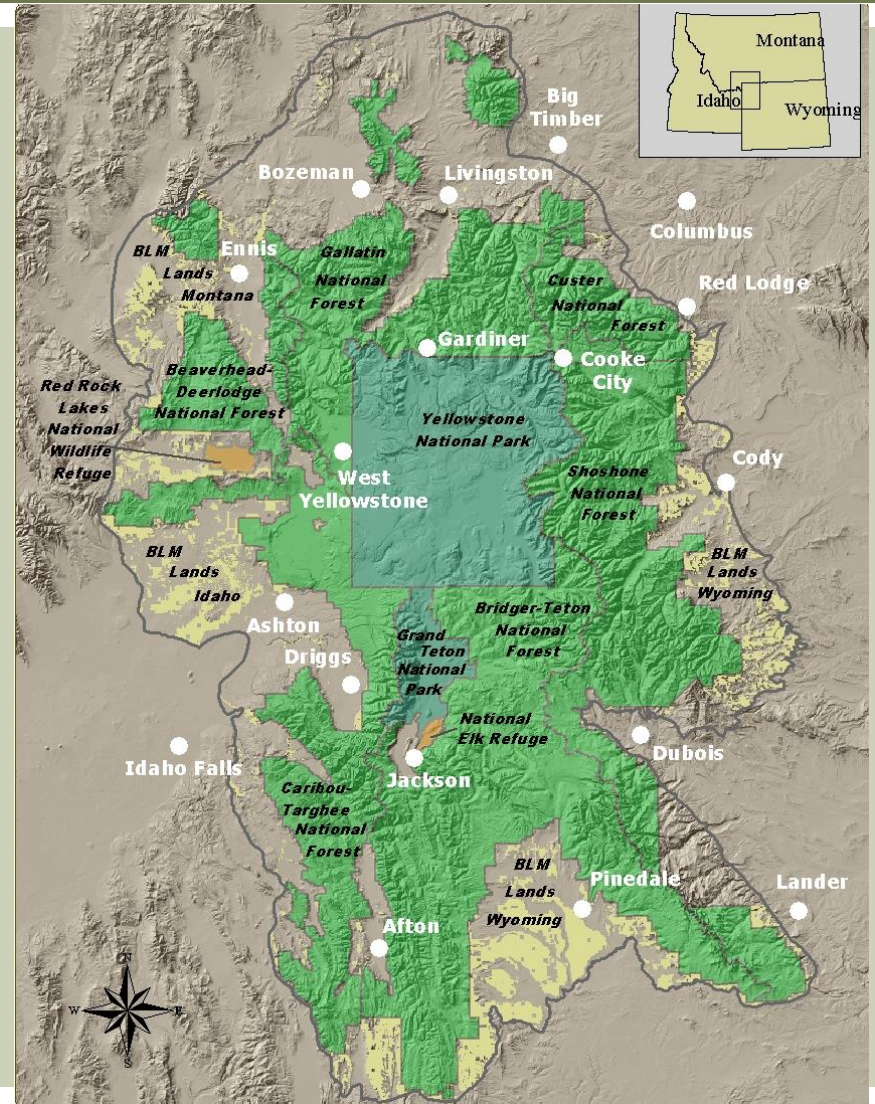
- Expanded purpose to include all fire management activities with a continued emphasis on wildfire coordination
  - Hazardous Fuels
  - Prevention and education
  - Science and research
- Included fire ecologists, dispatchers, fire planners, aviation experts, scientists, etc. to promote integration
- Expanded membership to Fish and Wildlife Service in 1999 and BLM in 2012

# GYCC FIRE MANAGEMENT SUBCOMMITTEE

## CURRENT MEMBERSHIP

Fire Management Officers and other fire professionals from:

- ID Falls, Wind River/Bighorn Basin, WY High Desert and Western MT Districts BLM
- Mountain-Prairie Region FWS
- Grand Teton and Yellowstone NPs
- Beaverhead-Deerlodge, Custer Gallatin, Shoshone, Bridger-Teton and Caribou-Targhee NFs



# GYCC FIRE MANAGEMENT SUBCOMMITTEE

## CURRENT PROJECTS

### Remote Cameras

- Microwave and cellular based cameras on several units
- Reduces firefighter and pilot exposure on remote incidents
- Real time footage available for planning and public meetings
- Cross discipline use (wildlife monitoring)



# GYCC FIRE MANAGEMENT SUBCOMMITTEE

## CURRENT PROJECTS

Remote Camera  
mountaintop  
delivery



# GYCC FIRE MANAGEMENT SUBCOMMITTEE

## CURRENT PROJECTS

Monitoring  
backcountry  
wildfire

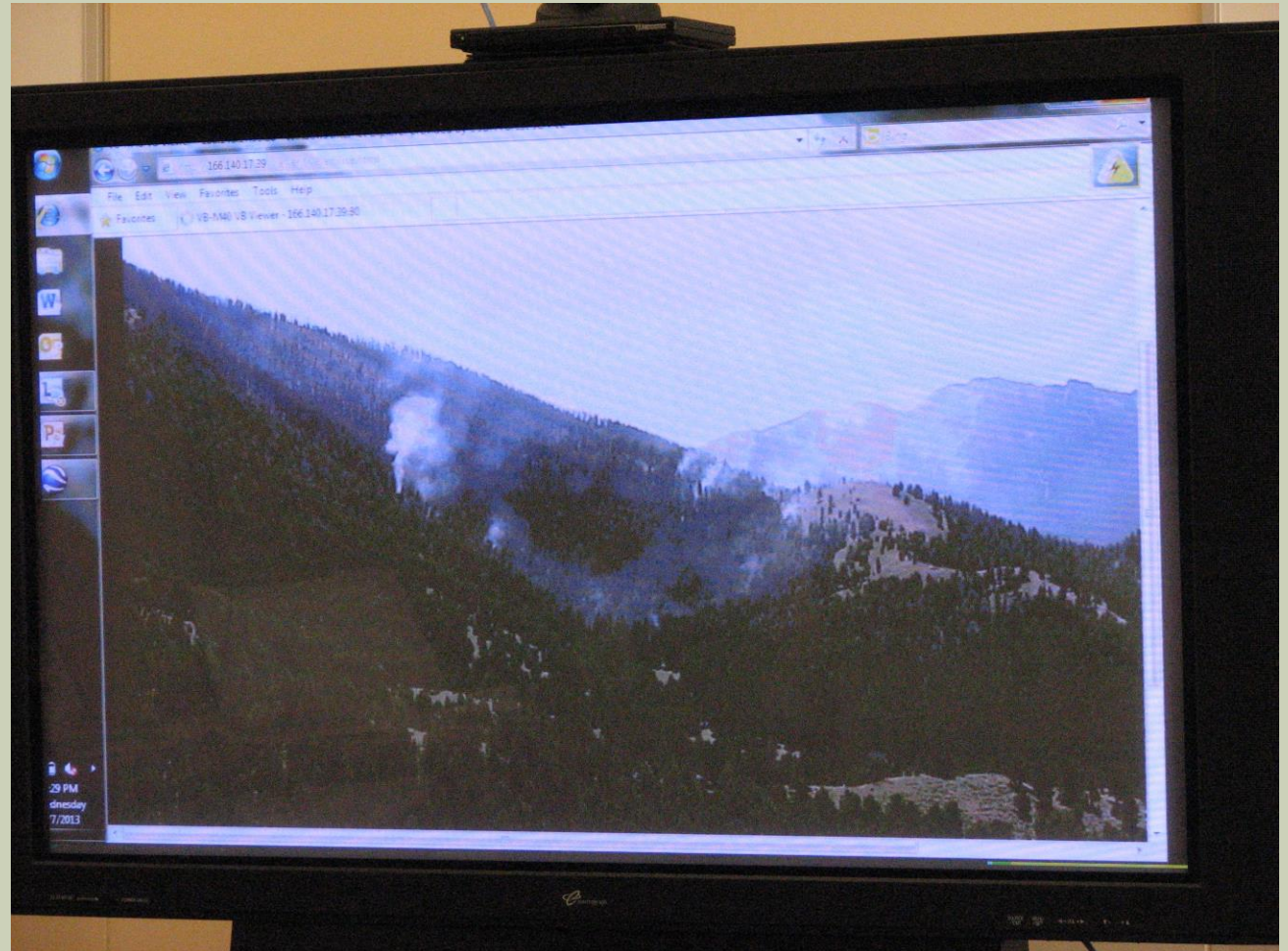




# GYCC FIRE MANAGEMENT SUBCOMMITTEE

## CURRENT PROJECTS

Real time footage  
at a community  
meeting





# GYCC FIRE MANAGEMENT SUBCOMMITTEE

## CURRENT PROJECTS

### Aquatic and Terrestrial Invasives Mitigation

- Working with the AIS and Weeds subcommittees on mitigation and education
- Successful “Hotsy” proposal
- Initial stages of developing early deployment weed wash stations

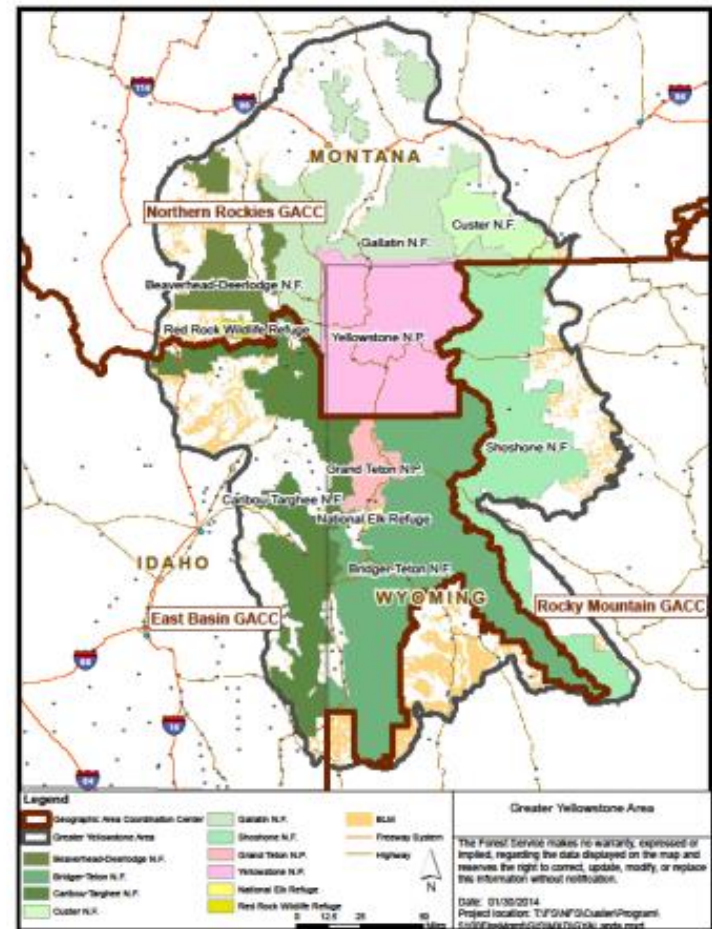


# GYCC FIRE MANAGEMENT SUBCOMMITTEE

## CORE MISSION EFFORTS

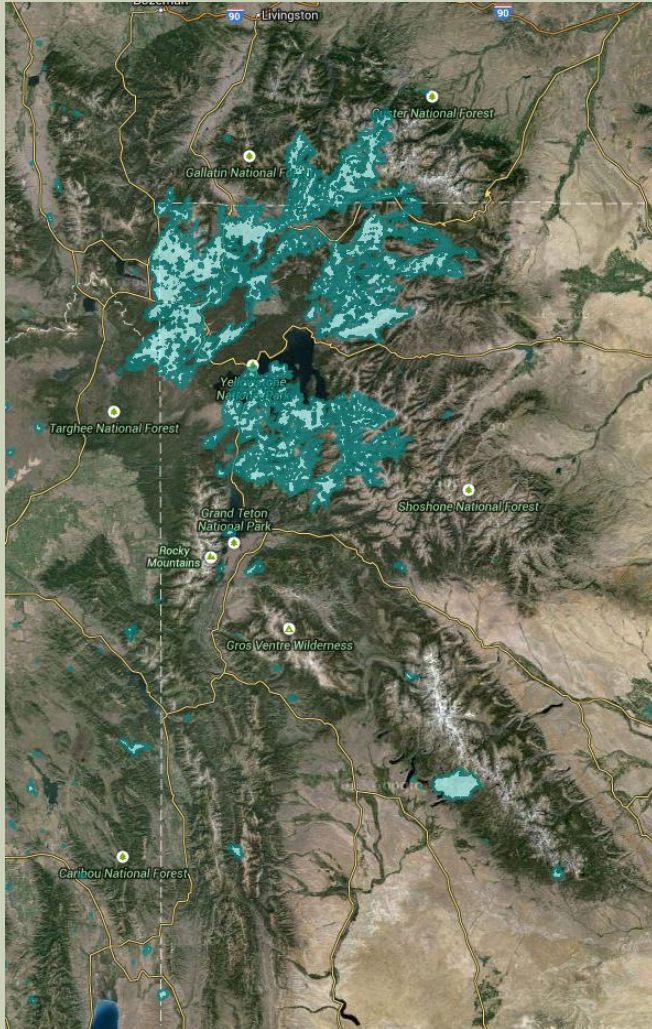
Continually working to improve resource sharing and boundary fire coordination

- More efficient dispatching
- Shared local incident management
- Coordinated public information efforts
- Coordinated wildfire management strategies

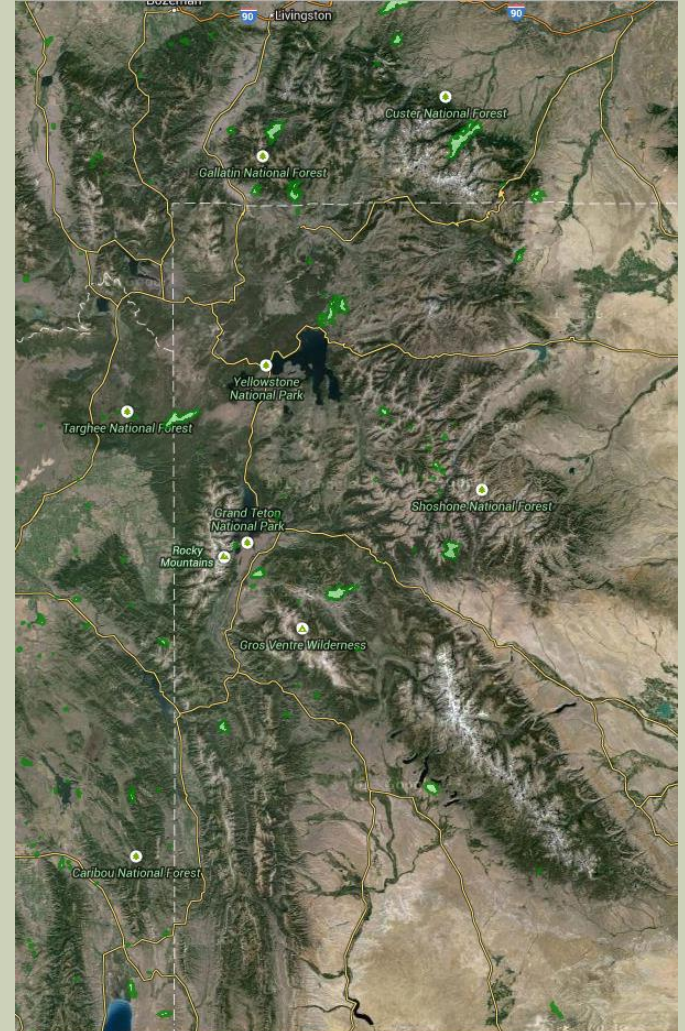


# GYCC FIRE MANAGEMENT SUBCOMMITTEE

## FIRE HISTORY 1980 - PRESENT



1980s

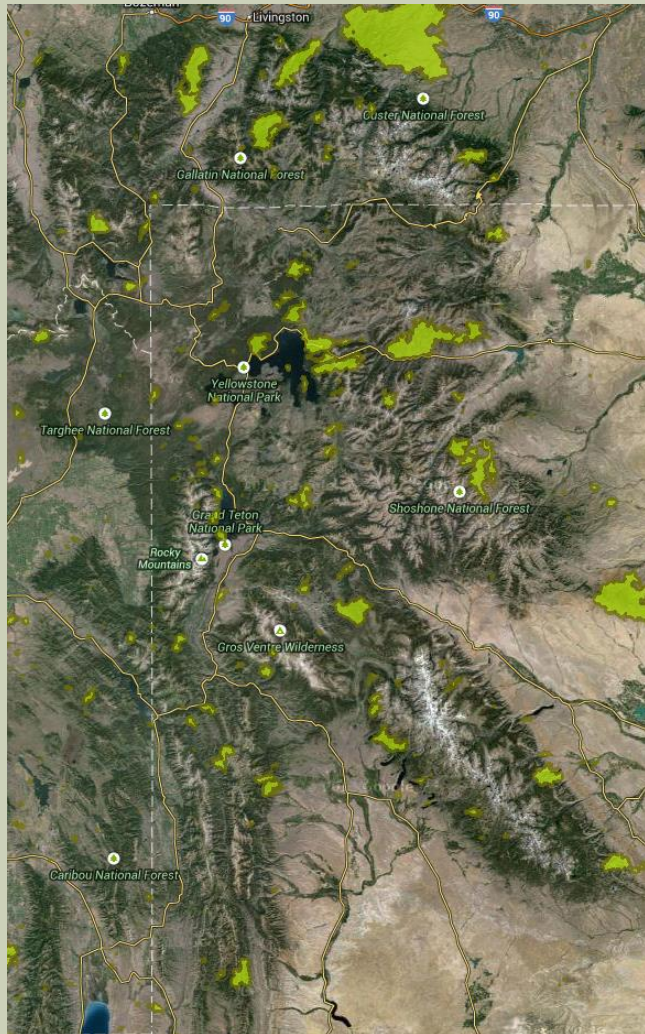


1990s

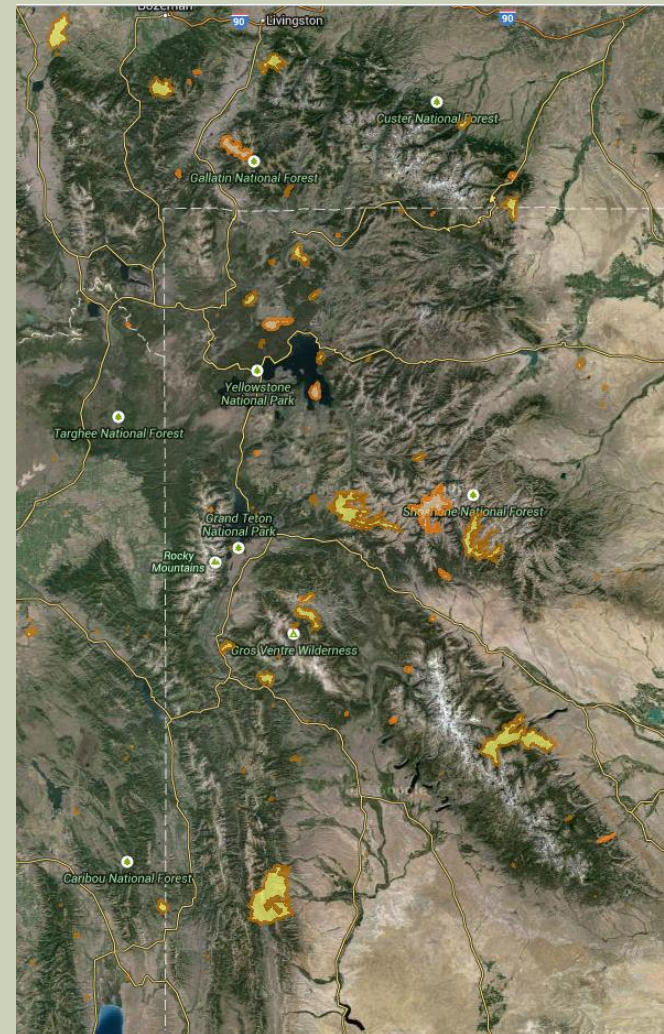


# GYCC FIRE MANAGEMENT SUBCOMMITTEE

## FIRE HISTORY 1980 - PRESENT



2000s

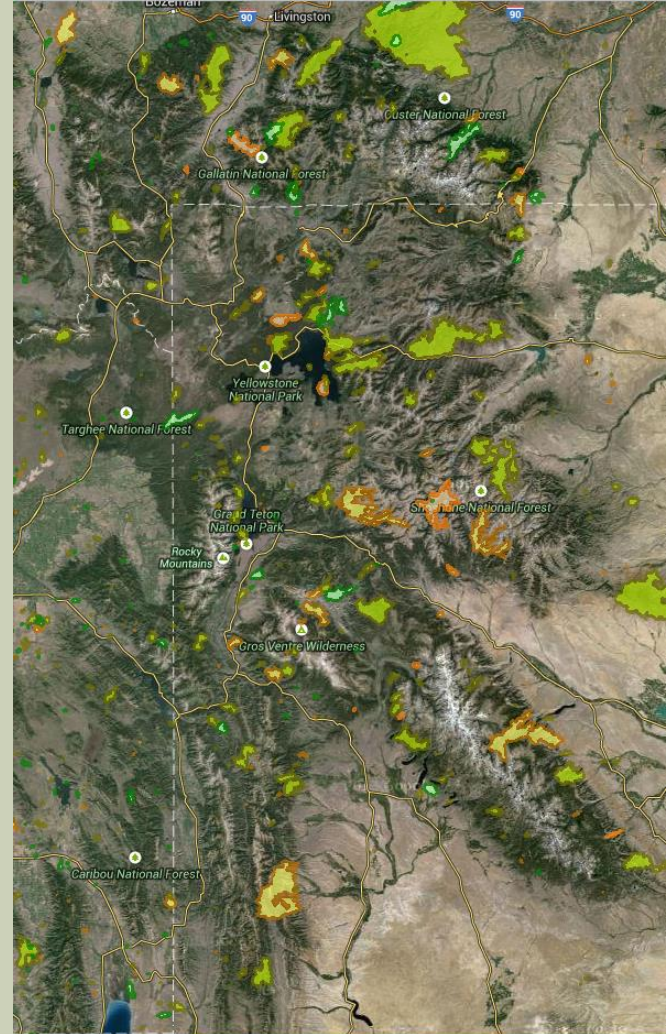
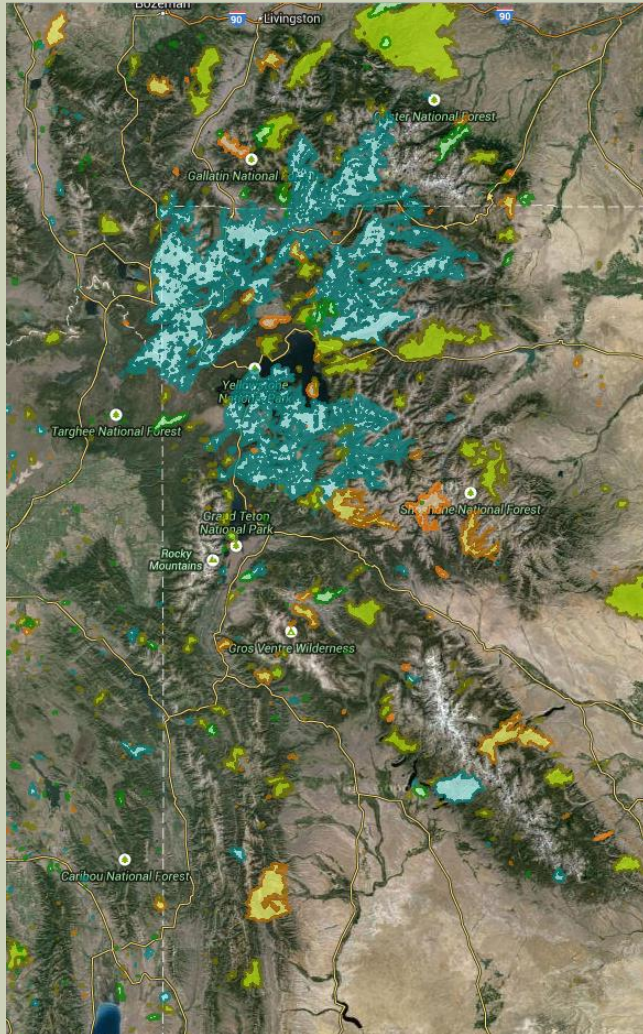


2010s



# GYCC FIRE MANAGEMENT SUBCOMMITTEE

## FIRE HISTORY 1980 - PRESENT



# VEGETATION CONDITIONS

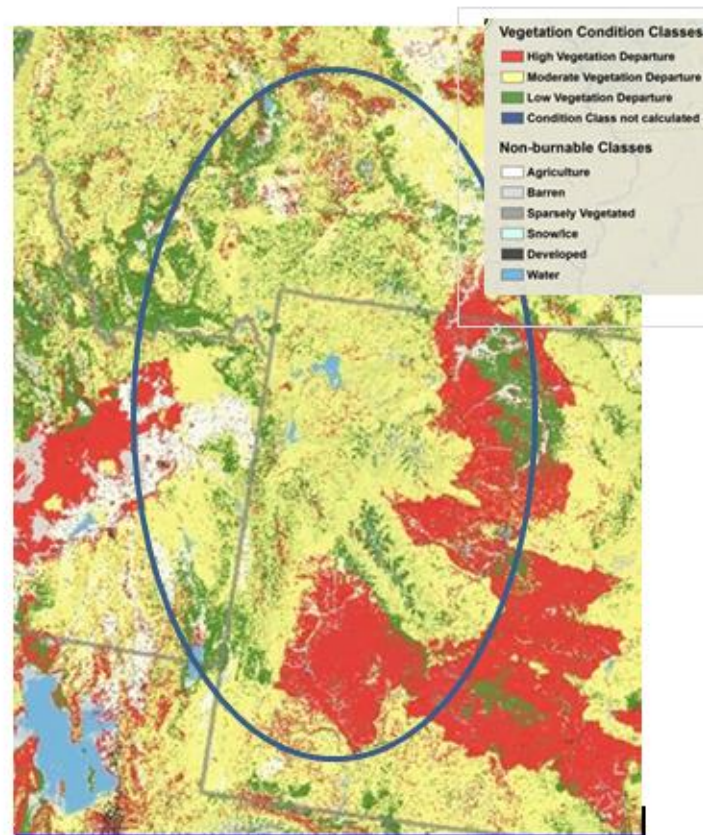
## Vegetation

The Landfire Vegetation Condition Class (VCC) quantifies the amount that current vegetation has departed from the simulated historical vegetation reference conditions based on changes to species composition, structural stage, and canopy closure. Three condition classes describe:

- low departure (VCC 1- green),
- moderate departure (VCC 2 - yellow), and
- high departure (VCC 3 - red).

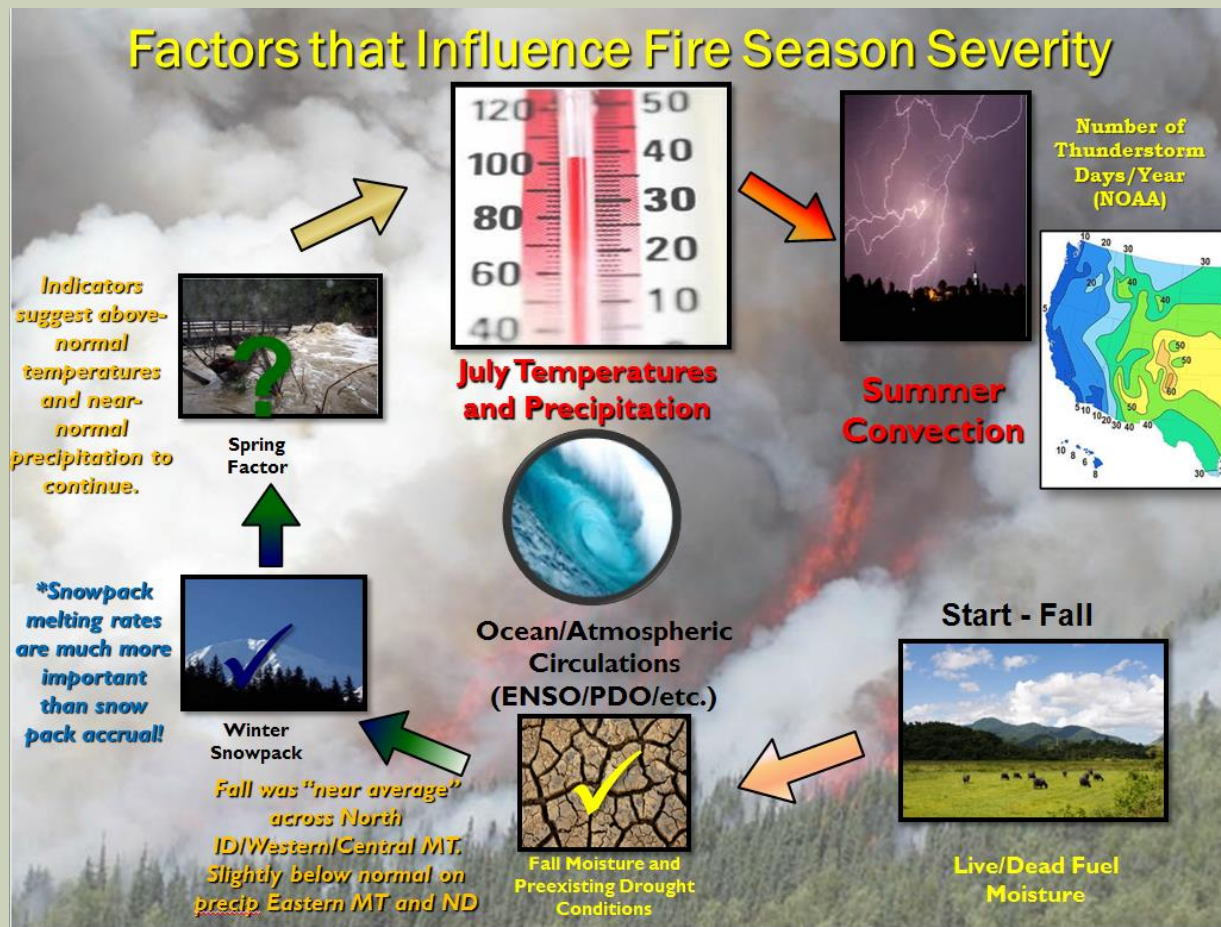
Most of the GYA is portrayed as either low or moderate departure from reference conditions. Areas with low departure are typically at the higher elevations, with the lower elevation Wyoming high desert lands on the southern and eastern sides of the GYA rated as a high departure.

Map Source: Land Fire

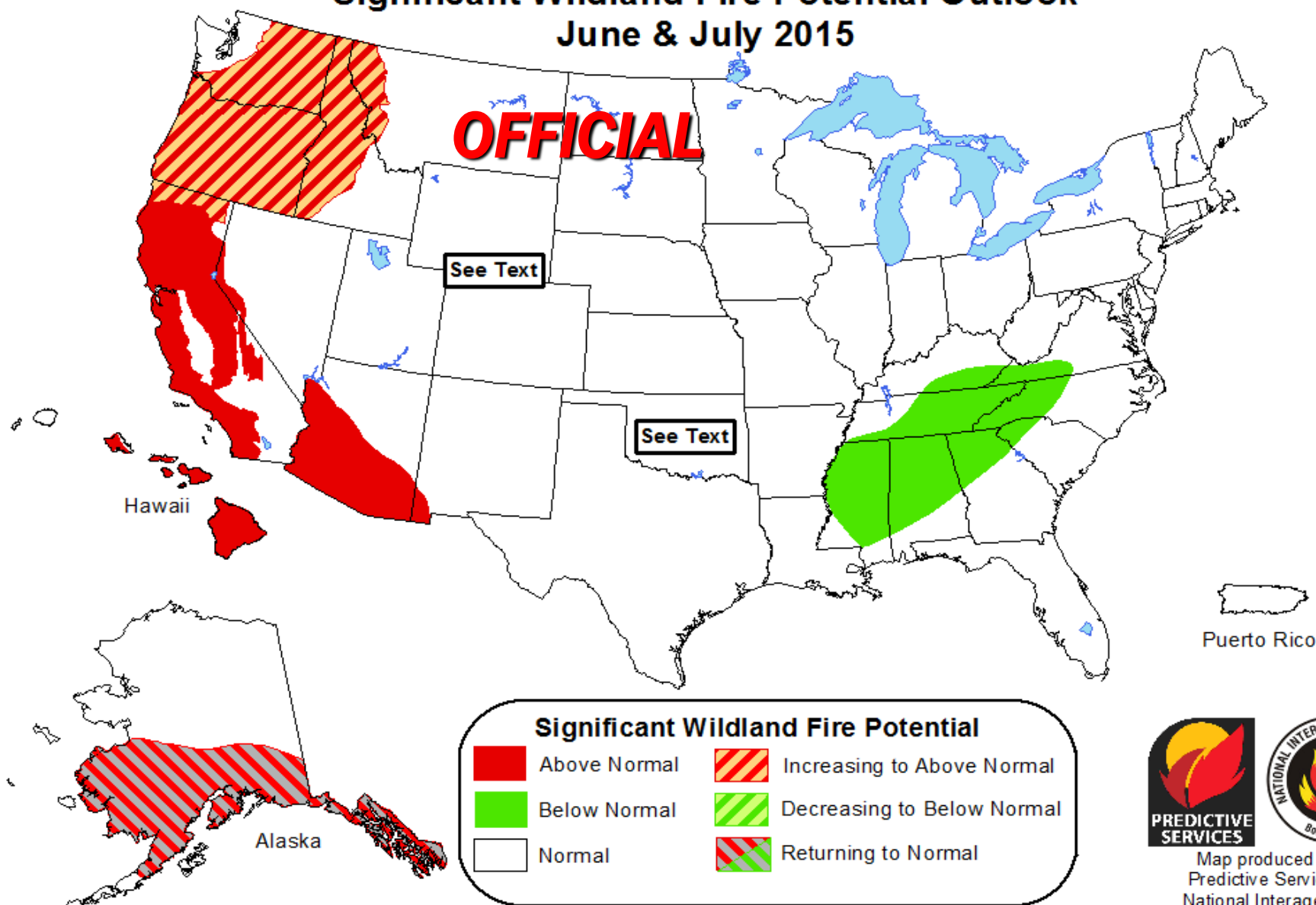




# 2015 FIRE SEASON???



# Significant Wildland Fire Potential Outlook June & July 2015



Above normal significant wildland fire potential indicates a higher than usual likelihood that wildland fires will occur and/or become significant events. Wildland fires are still expected to occur during forecasted normal conditions as would usually be expected during the outlook period. Significant wildland fires are still possible but less likely than usual during forecasted below normal periods.



Map produced by  
Predictive Services,  
National Interagency  
Coordination Center  
Boise, Idaho  
Issued April 1, 2015  
Next issuance May 1, 2015

# GYCC FIRE MANAGEMENT SUBCOMMITTEE

## QUESTIONS

Mike Goicoechea  
Fire Subcommittee  
Chair

[mgoicoechea@fs.fed.us](mailto:mgoicoechea@fs.fed.us)

John Thompson  
Fire Subcommittee  
CO-Chair

[j75thomp@blm.gov](mailto:j75thomp@blm.gov)

