

DOI S.O. 3362 Implementation Montana Update



Michael Forsburg

Karen Loveless

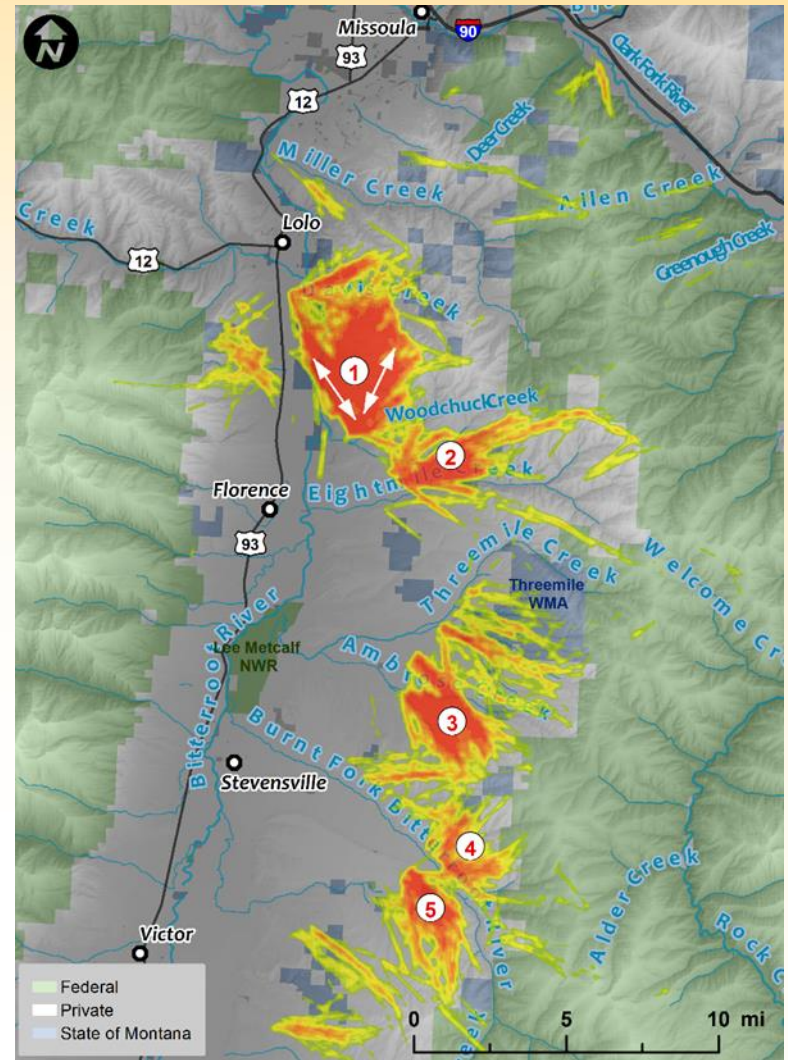
April 3, 2019



Projects Underway

Seasonal range and migration route delineation

- Statewide GPS collar data
 - Elk
 - mule deer
 - Pronghorn



Projects Underway

Madison Valley pronghorn

40 collars deployed

- 8 mortalities
- Initial observations of herd structure, barriers
- Spring migration not yet underway



Building Collaborations:

Montana S. O. 3362 Partners Workshop

Objectives: Share ideas, build partnerships

- immediate goal: proposals for NFWF grants
- long-term goal: partnerships and momentum for future work

Montana Wildlife and Transportation Summit

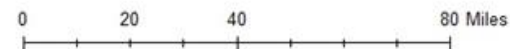
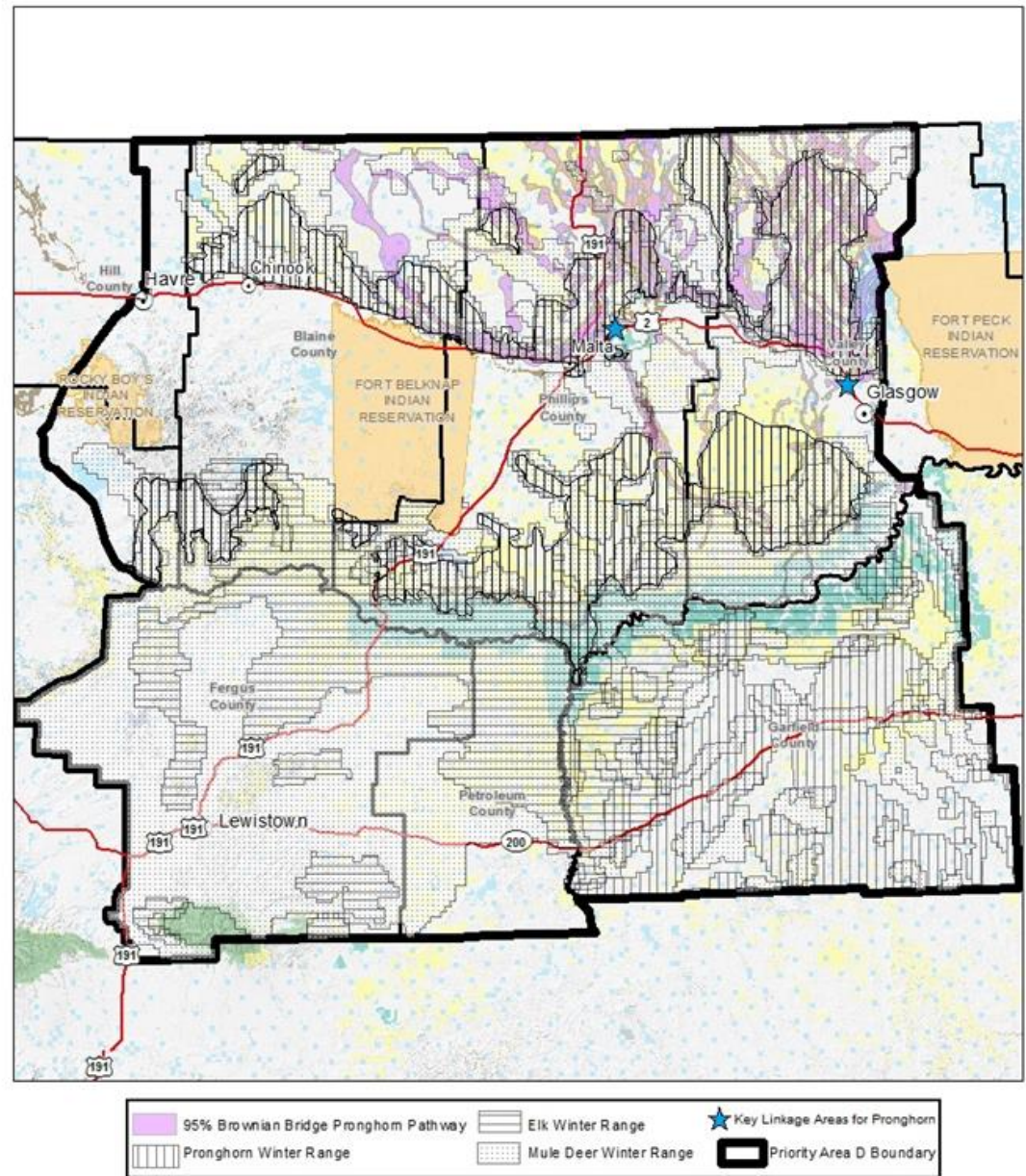
Objectives: Strengthen partnerships, build common understanding of wildlife and transportation issues, identify opportunities and challenges



NFWF Grant Proposal

Focal Area D: Canadian Border to Fort Peck Reservoir

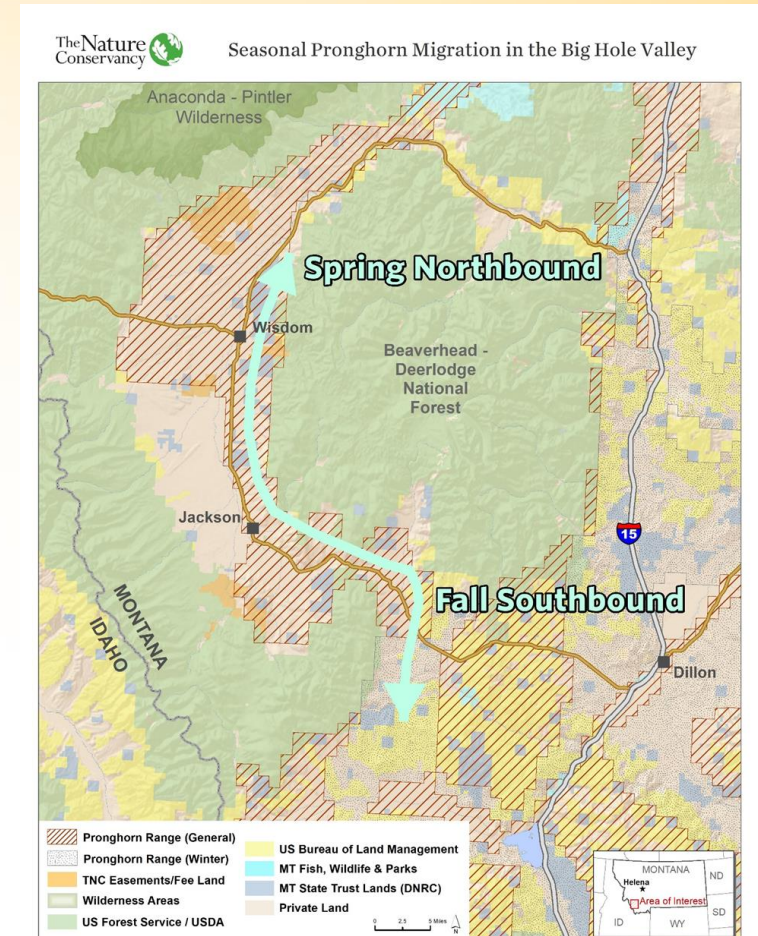
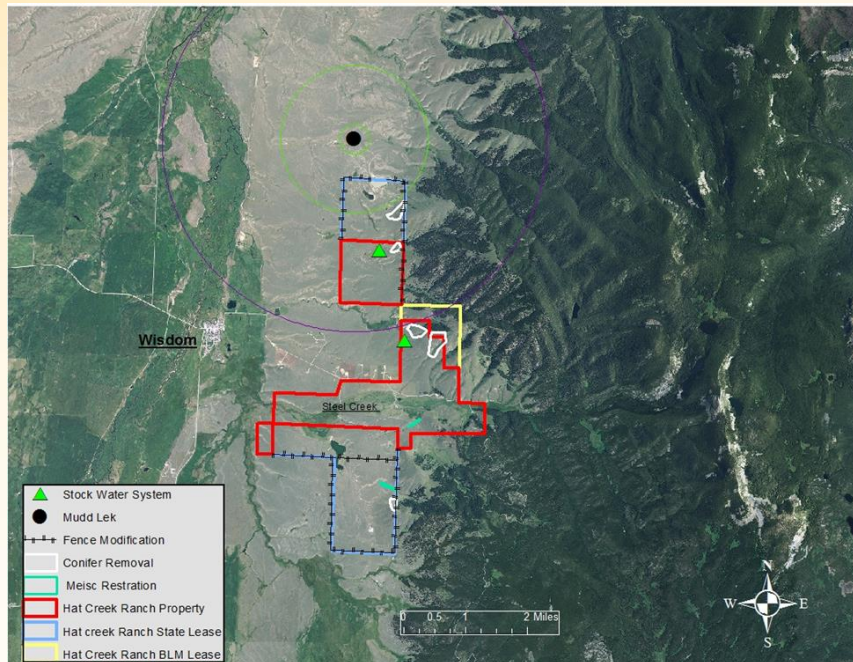
- Landscape scale connectivity and habitat quality for elk, mule deer and pronghorn
- Project built upon existing, ongoing collaboration



NFWF Grant Proposal Focal Area C: Big Hole/Bitterroot

Habitat connectivity and access to seasonal habitats for pronghorn, elk, mule deer, moose and sage grouse

- Project built upon existing, ongoing collaboration



NFWF Grant Proposal

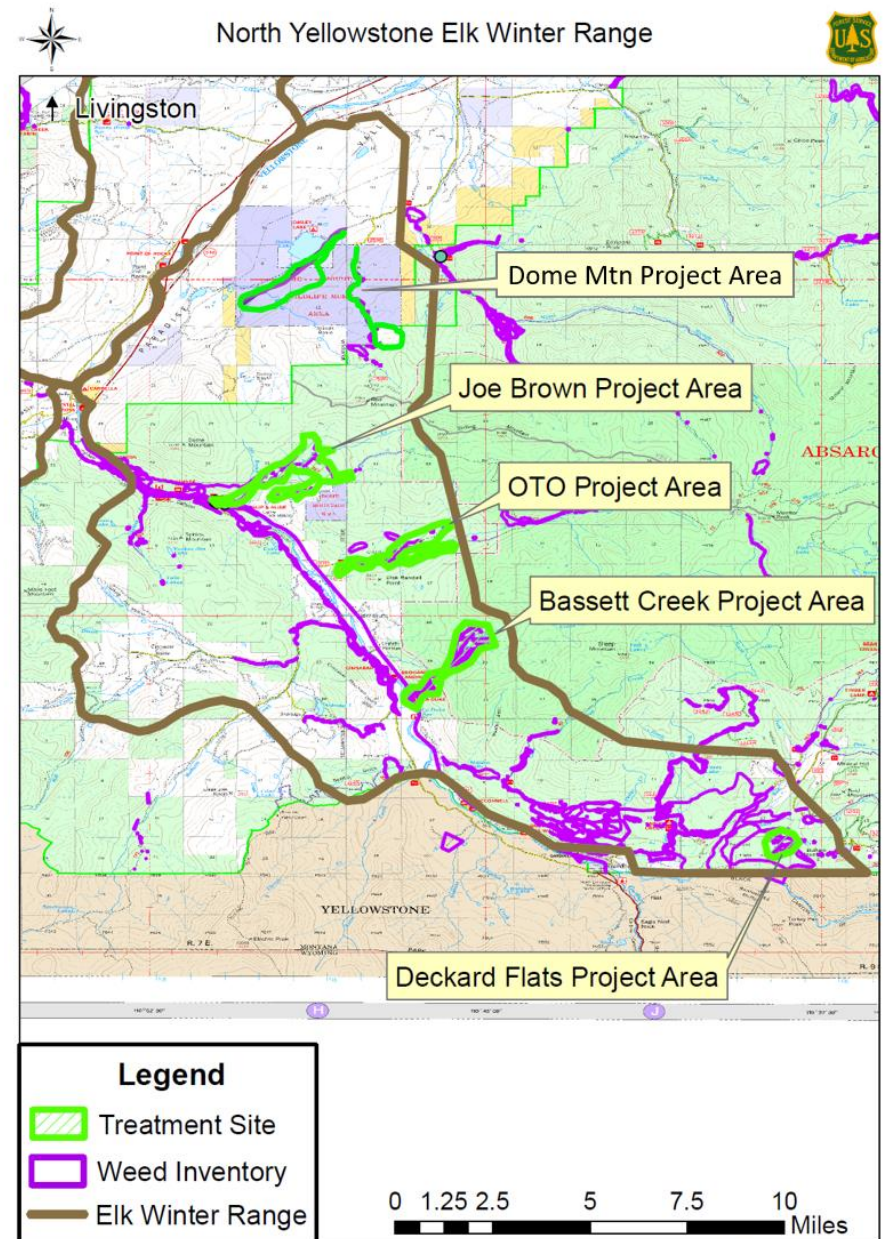
Focal Area B: Upper Yellowstone (#1):

Habitat improvement through noxious weed treatment on elk/mule deer migration corridor & winter range

New Collaboration:

USFS, FWP, RMEF

Potentially private landowners, BLM



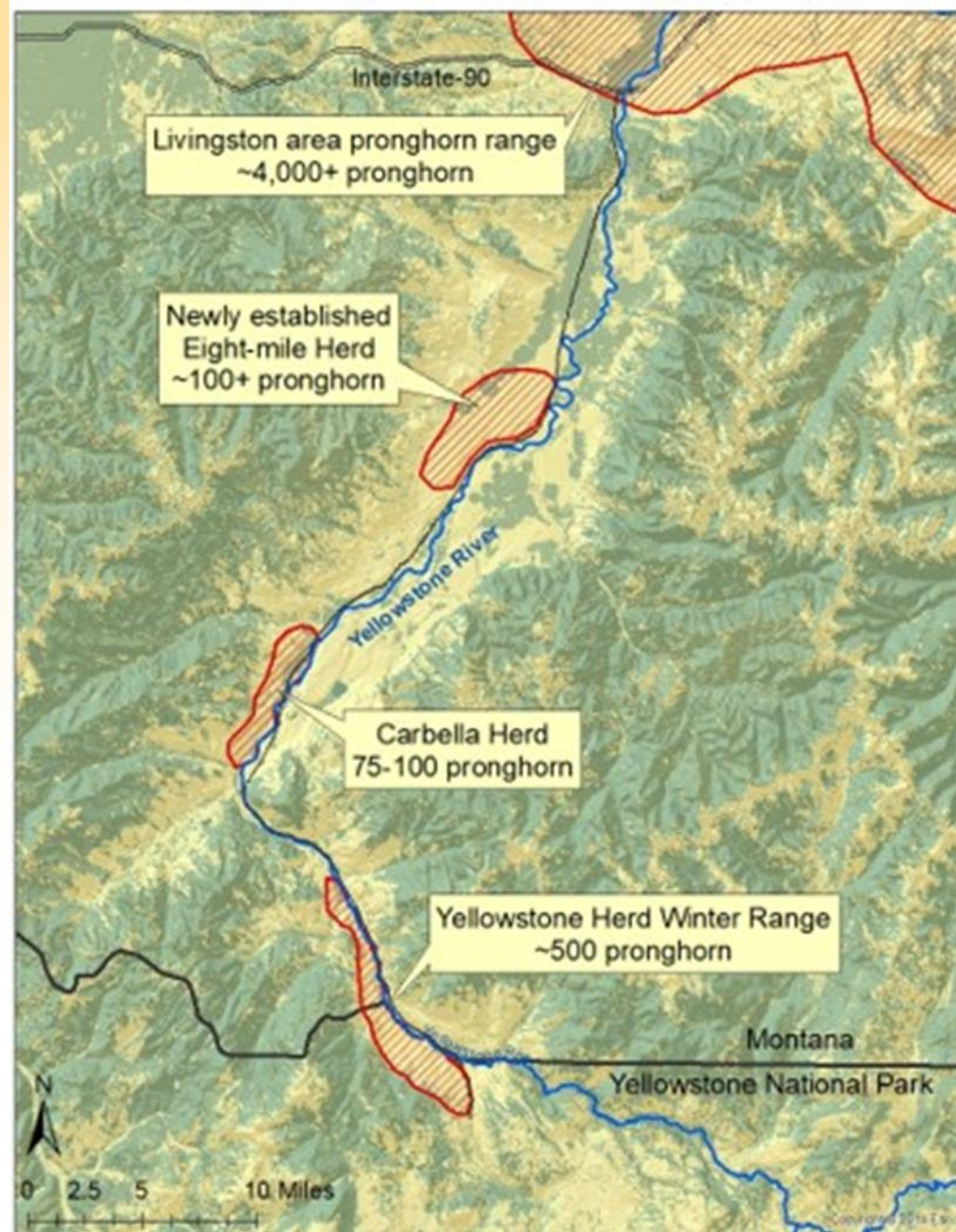
S. Renck - April 2018

NFWF Grant Proposal

Focal Area B: Upper Yellowstone (#2):

Fence modifications & removals to facilitate pronghorn movements

New Collaboration:
NPCA, FWP, Private Landowners
Potentially BLM



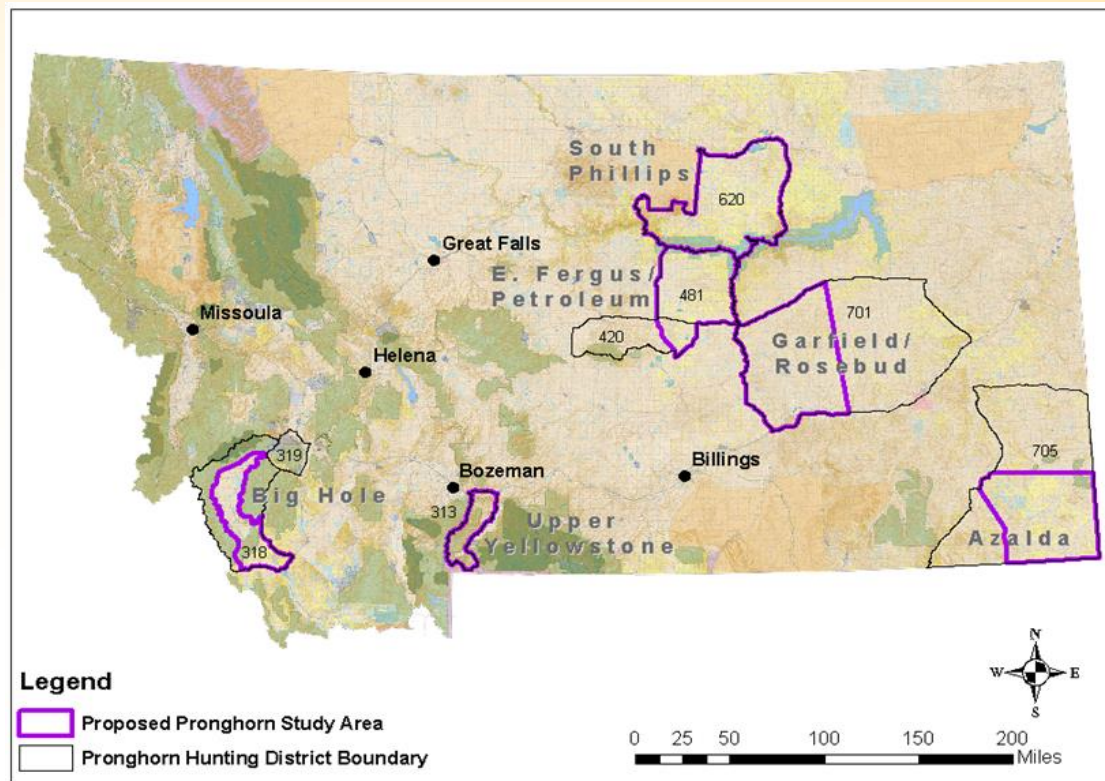
FWP Research Initiative

Pronghorn statewide research proposal:

- Migration and connectivity
- Identify movement barriers
- Inform habitat projects

Eastern MT:

- Identify factors limiting population recovery

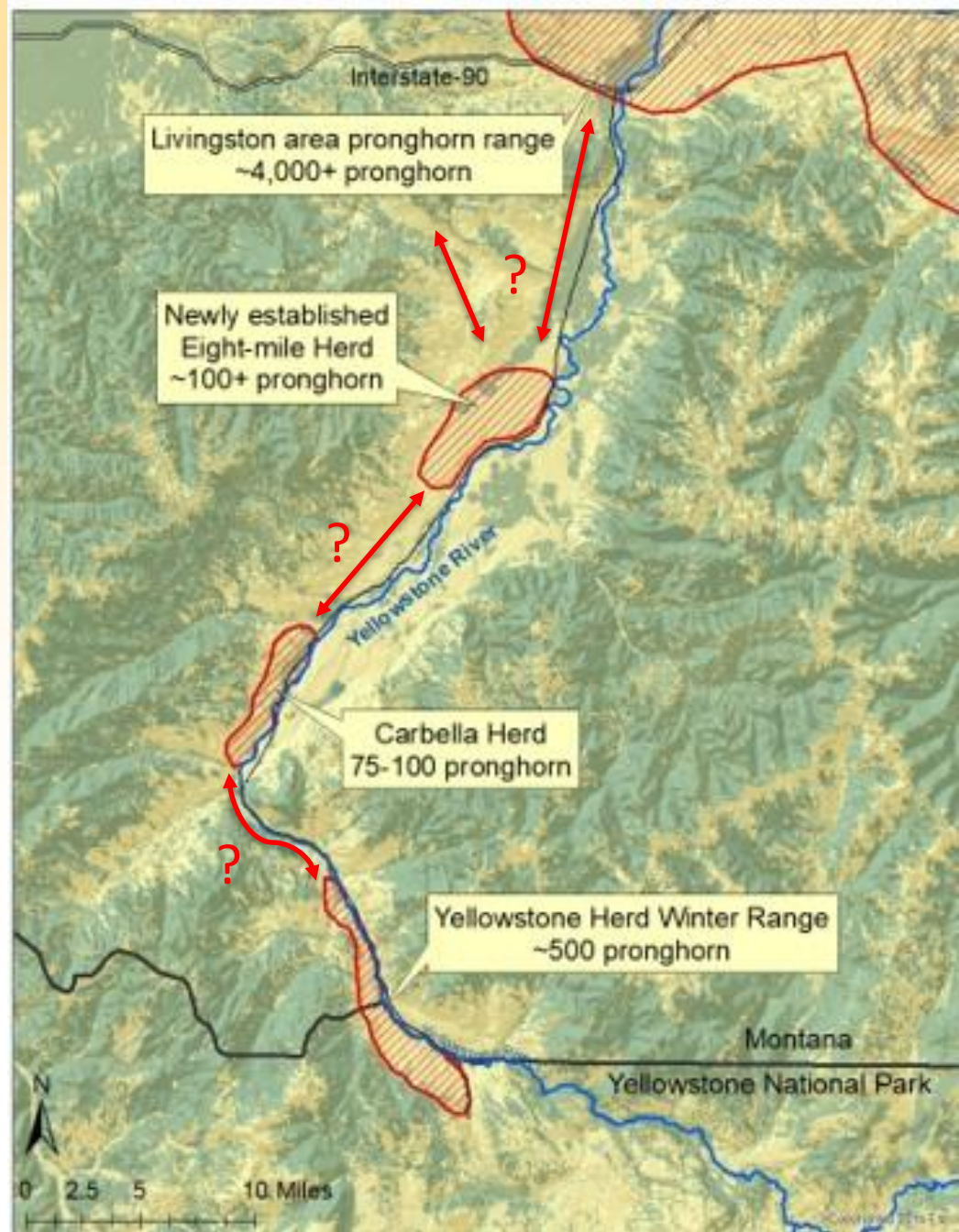


FWP Research Initiative

Pronghorn statewide research:

Upper Yellowstone study area

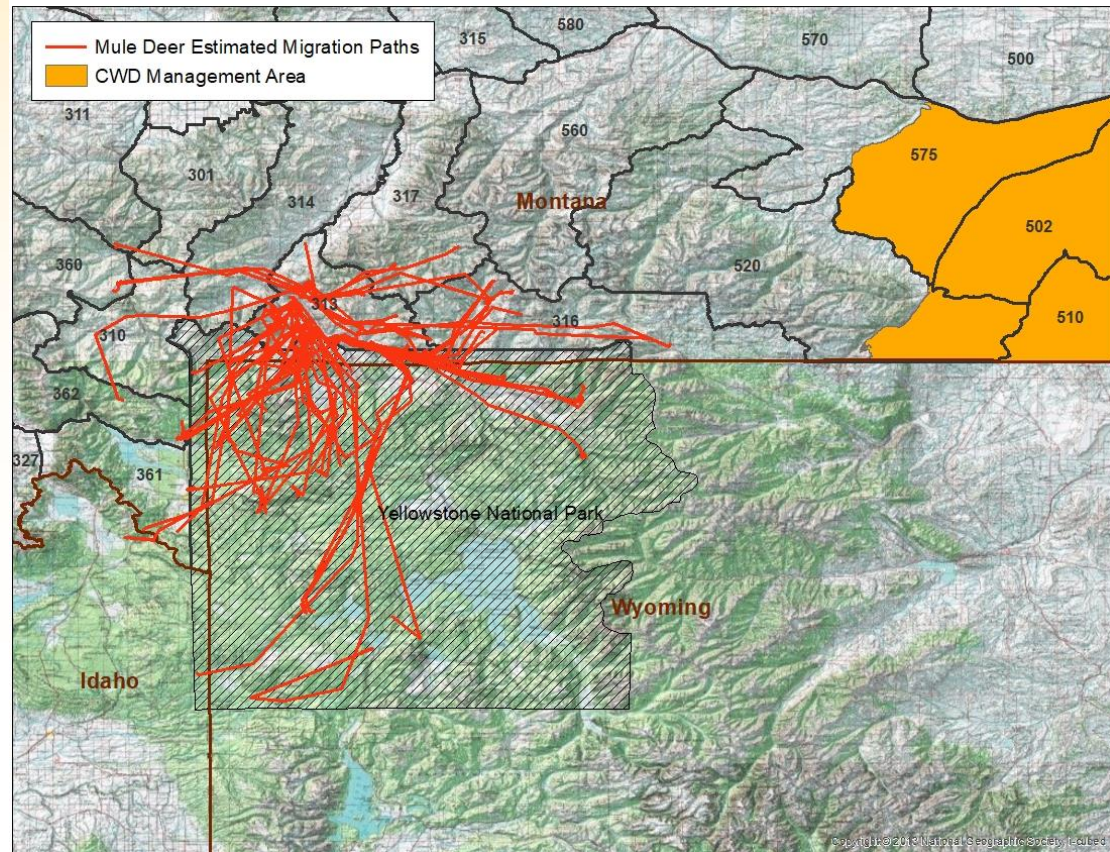
- Connectivity
- Migratory corridors
- Barriers to movement
- Utilize data to inform habitat improvement projects
- Opportunity for collaboration



FWP Research Initiative

Mule Deer Migration, Connectivity and Disease Risk

- Mule Deer movement and connectivity in CWD area
 - Collaboration with WGFD
- Gardiner Mule Deer
 - Migration & disease risk
 - Previous work in 1990's (P. Gogan, USGS)
 - Potential collaboration with YNP



Plans for upper Yellowstone follow-up:

- Follow-up meeting to be scheduled
- Reach out to include additional partners
- Identify opportunities for collaboration
- Field trip with MDT to look at wildlife crossing possibilities
- Venue for ongoing collaboration?

