

TERRESTRIAL INVASIVE SPECIES

CODY, WYOMING

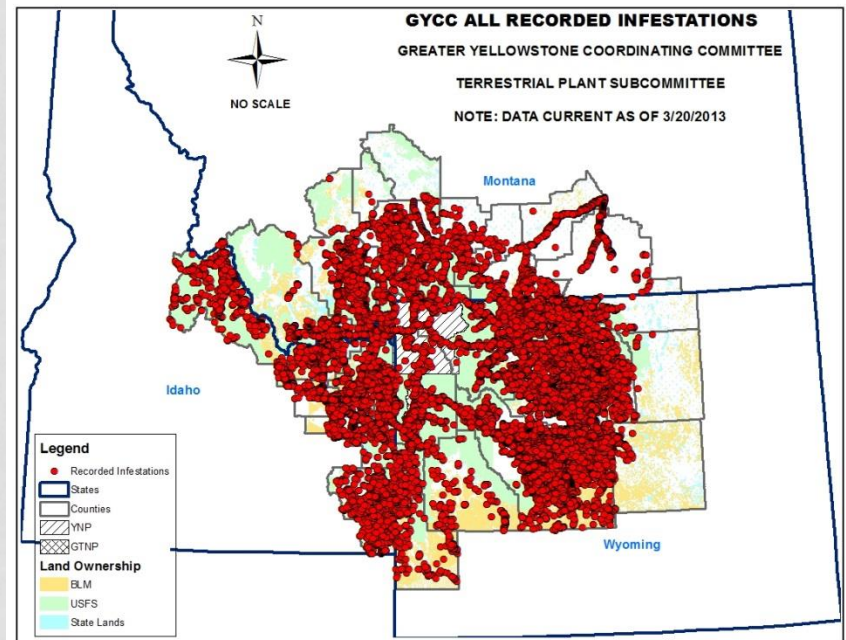
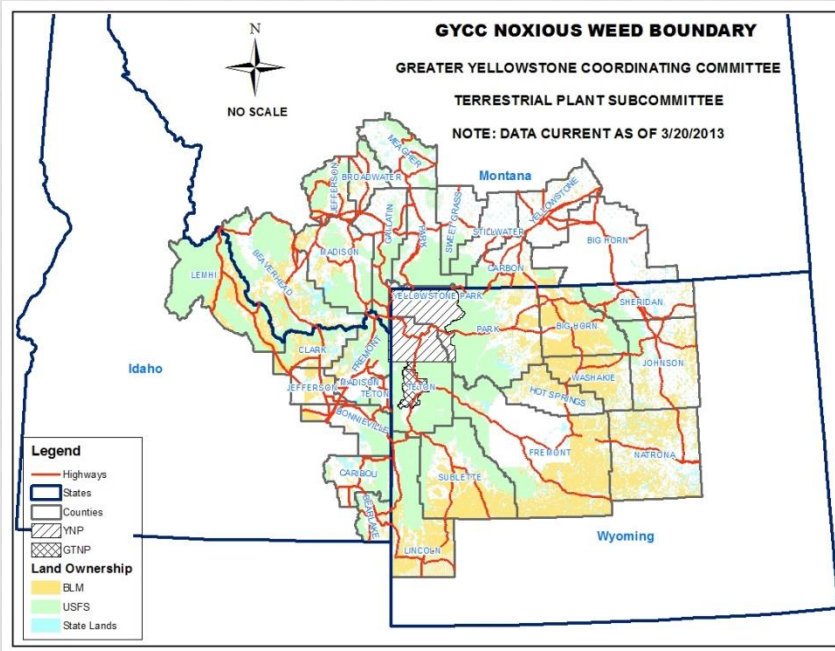


OBJECTIVES

- Update the executive committee on the state terrestrial invasive species in the GYA
- Update the executive committee on subcommittee objectives and progress



STATE OF THE THREAT: WIDESPREAD



GIS: INVENTORY/MAPPING

- Survey, report, and share information about current infestations in the GYA.
- Utilize inventory information to prevent spread, reduce current infestations and protect weed free areas.
- Utilize inventory information to identify and recommend management priorities.

**GREATER YELLOWSTONE COORDINATING
COMMITTEE NOXIOUS WEED SUBCOMMITTEE**

HOME

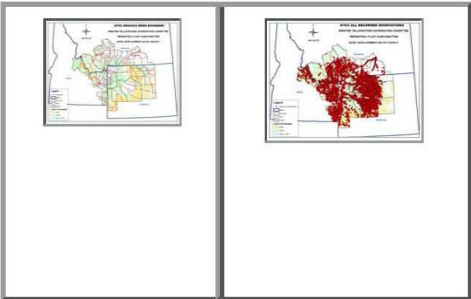
Potential
Invaders -
Coming
Soon

Surveyed
Areas -
Coming
soon.

Gravel Pits -
Coming
soon

Cooperators

Metadata -
Coming
soon



**GYCC NOXIOUS
WEED DATA
BOUNDARY**

[CLICK HERE FOR
BIGGER PICTURE](#)

**GYCC ALL RECORDED
INFESTATIONS**

[CLICK HERE FOR
BIGGER PICTURE](#)

[INTERACTIVE MAP WITH BOUNDARY
OUTLINE AND ALL INFESTATION](#)

(MUST BE A MEMBER OF THE
SUBCOMMITTEE)

**Click on the plant for more
information**

NEW INVADERS	LOCALIZED INVADERS	BROAD- SCALE INVADERS	PLANTS OF CONCERN
Download New Invader Map Images	Download Localized Invader Map Images	Download Broad-scale Invader Map Images	Download Plants of Concern Map Images
Absinth wormwood	Dyer's woad	Berteroa/False madwort/Hoary Alyssum	African mustard
Blue weed	Field Scabiosa	Black henbane	Babysbreath

PREVENTION AND EARLY DETECTION RAPID RESPONSE

- Alert GYCC members and other interested parties as soon as possible when new invaders to the GYA are discovered.
- Coordinate efforts among interested parties to rapidly respond and treat new infestations in a cooperative manner.
- GYCC members strive to keep clean (weed free) areas clean through active prevention projects and programs

EDUCATION PROGRAMS



- Develop materials, programs and activities that reach out to the variety of people who live in, travel through, or have an interest in the well-being of the GYA.
- Work cooperatively to provide support among committee members to provide educational programs and materials to the public.
- Implement educational programs and activities.

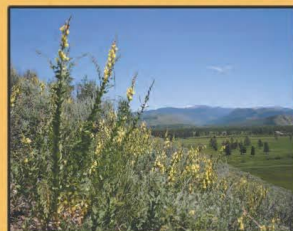
EDUCATION



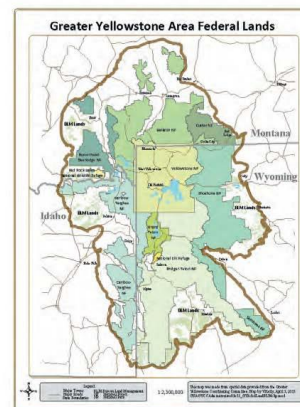
The following partners
contributed to the Greater
Yellowstone Coordinating
Committee Invasive Plant Guide:

USDI Fish & Wildlife Service
USDI National Park Service
USDA Forest Service
Bureau of Land Management
Wyoming Weed & Pest Council
Idaho Weed Control Association
Montana Weed Control Association

Invasive Plant Pocket Guide



Publication of the Greater
Yellowstone Coordinating
Committee



Weed Awareness

This guide serves as a basic primer for weed awareness, detection, prevention, and ecology. Share your knowledge with visitors, co-workers, contractors, and others. Be aware of how your actions or the actions of others can help spread noxious weeds. Plan and implement your work with weed prevention in mind.

Best Management Practices for Controlling the Spread of Noxious Weeds

QUICK REFERENCE

Implement the use of Best Management Practices when planning any activity that will cause a ground disturbance. These practices include, but are not limited to, the following:

- **Learn to Identify Noxious Weeds** - Offer noxious weed identification training to all personnel involved in the project.
- **Conduct a Survey** - Before the project begins, conduct a survey to ensure that the entire project area—including all travel corridors into and out of the project area—is free of noxious weeds.
- **Inspect All Equipment** - Inspect all equipment used in the project—including personal vehicles—to ensure that it is free of dirt or debris that may contain noxious weed seeds or plant parts.
- **Use Certified Weed Free Products** - Require that materials used during construction and restoration—including gravel, sand, top soil, seed, and mulch—be certified weed free.
- **Have a Plan** - Provide an approved noxious weed management plan if required or requested by the state or county weed district.
- **Conduct Periodic Inspections** - Throughout the duration of the project, enlist authorized (trained) personnel to conduct periodic inspections of the project site.
- **Restore the Area** - Upon project completion, revegetate or restore any and all disturbed areas.

If noxious weeds are discovered during any of the above processes, immediately report the sighting or infestation to the appropriate department and/or agency personnel. Treatment, control, or isolation of the species should be initiated before any ground disturbance begins.

For a list of species of concern in the project area, contact the county weed district.

UNIFIED MESSAGE

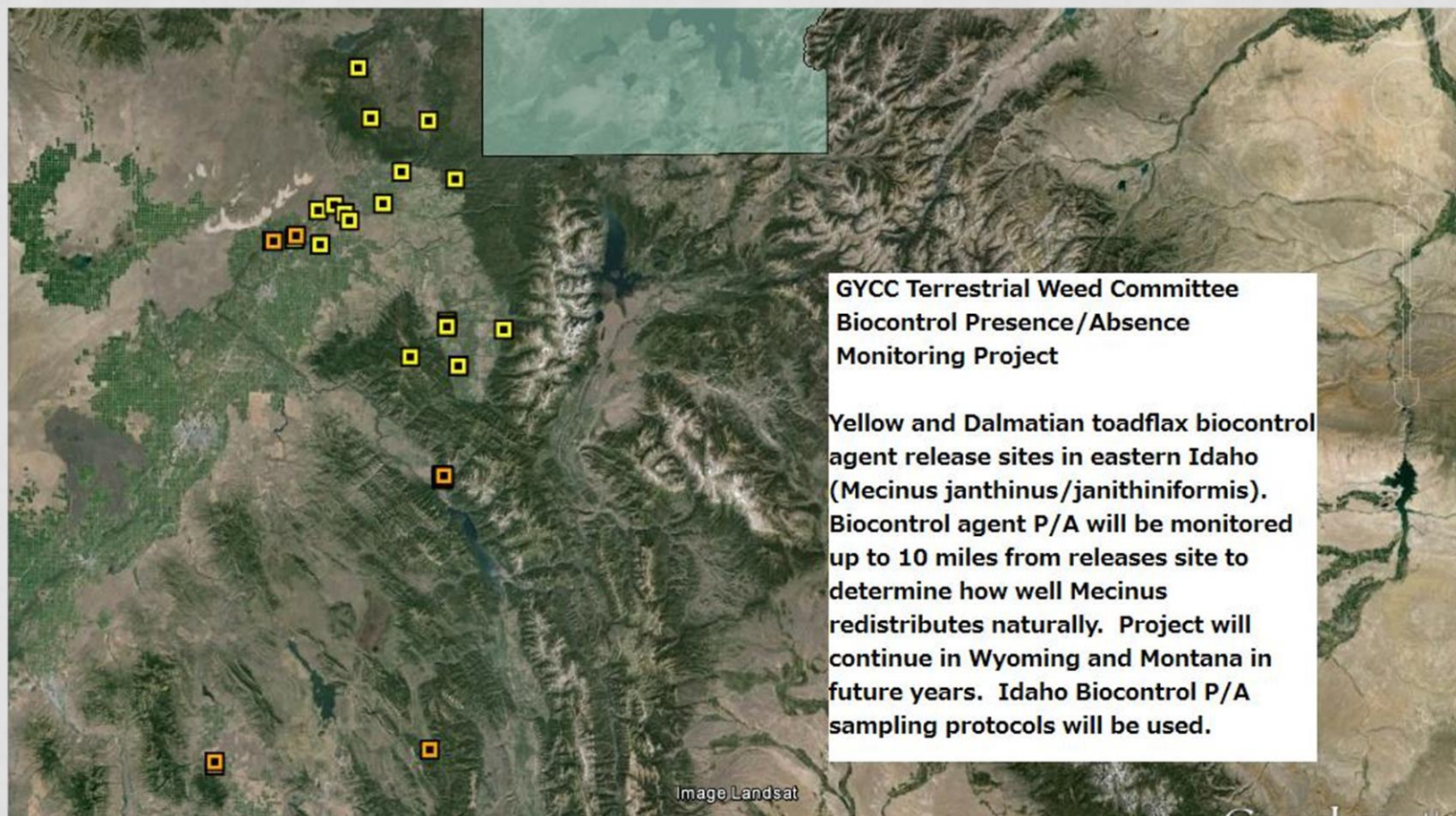


INTEGRATED WEED MANAGEMENT/BEST MANAGEMENT PRACTICES

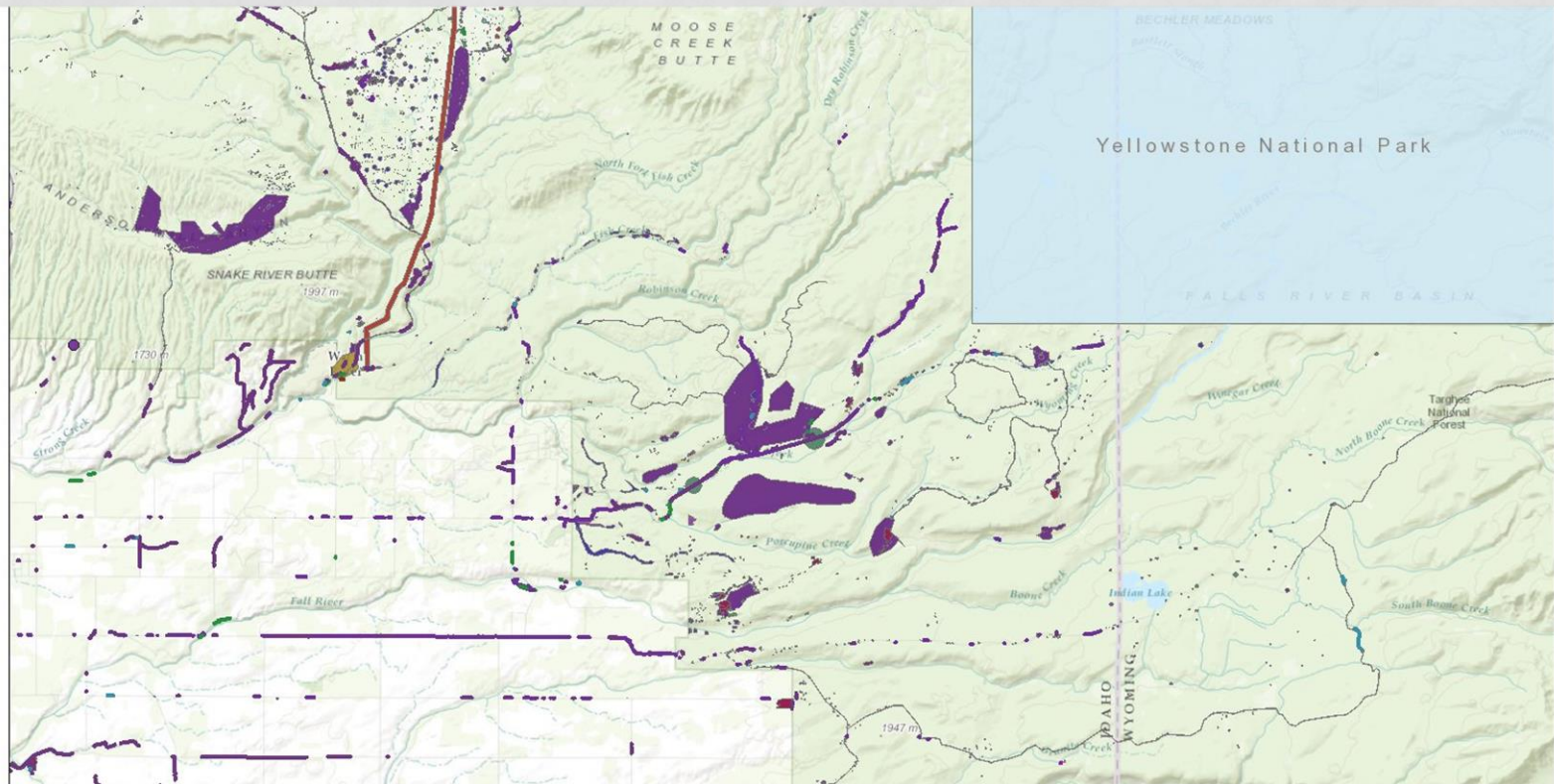


- Coordinate and cooperate on management activities throughout the GYA whenever possible.
- Provide programs and/or recommendations that encourage best practices within the GYA



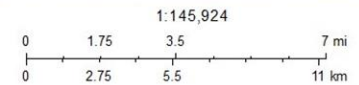
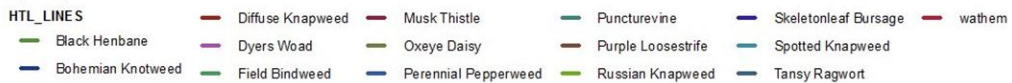


BIO CONTROL PRESENCE/ ABSENCE



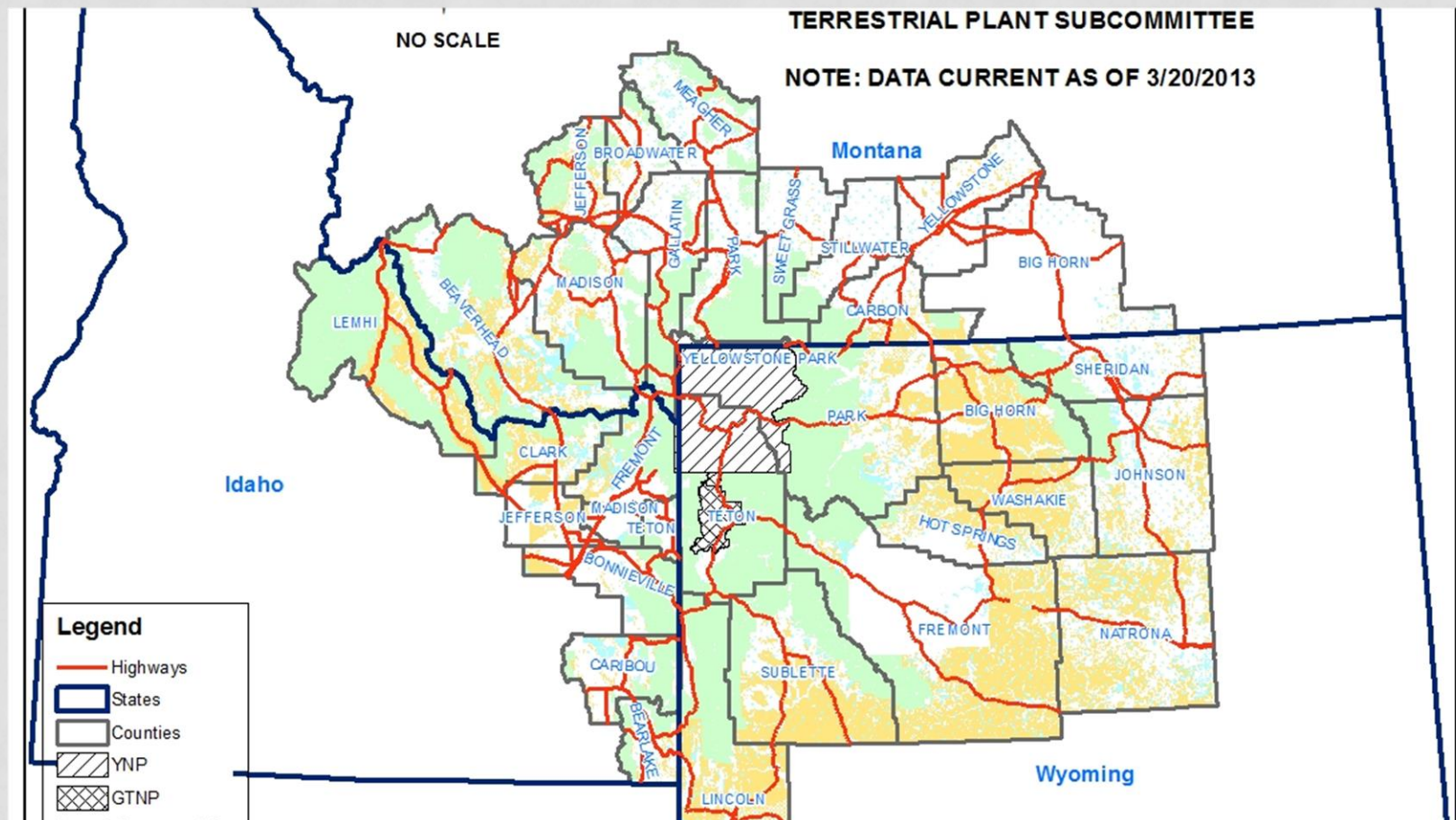
April 24, 2015

HTL_LINES



COOPERATIVE WEED WORK ACTION DAYS

IDAHO- JULY 28-30



STRATEGIC EFFECTIVE PLAN

KEY MESSAGE

Terrestrial invasives are widespread. Many organizations and people are valiantly fighting this resource threat, yet resources are lacking to prevent future spread, much less eliminate current infestations.



Questions?

