

# FWP Wildlife Movement and Migration Strategy

An aerial photograph showing a large herd of elk migrating across a vast, snow-covered landscape. The elk are dark brown and are moving in a loose, winding line from the upper left towards the lower right. Their long shadows are cast across the snow, indicating a low sun position. The snow is uneven with some tracks and small patches of vegetation visible.

Quentin Kujala

Great Yellowstone Coordinating Committee

October 28, 2020

Renee Lemon, Justin Gude, Rick Northrup, Catherine Wightman, Brian Wakeling, Ken McDonald  
Photo: Dean Waltee



# Wildlife movement needs

Functional habitat:

1. Within range movements
2. Migration
3. Dispersal
4. Gene flow
5. Range shifts

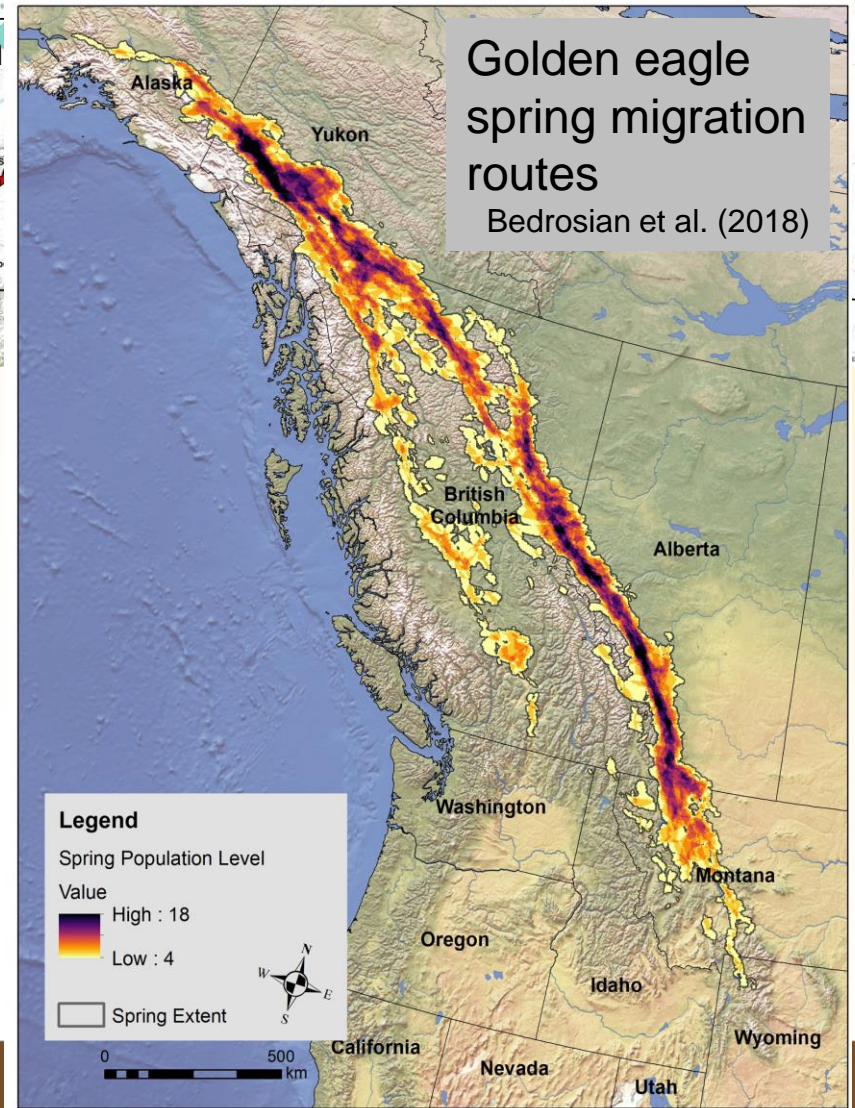
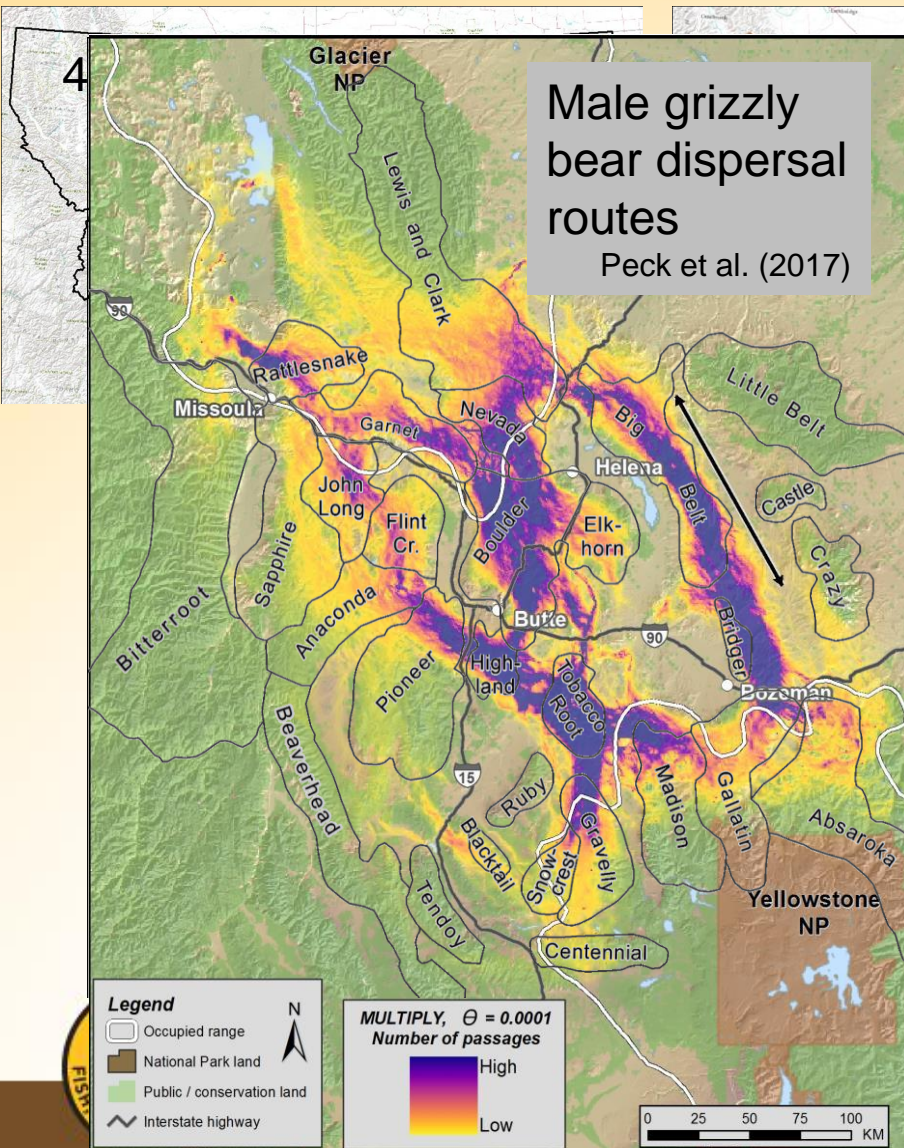


Kelly Proffitt





# Research





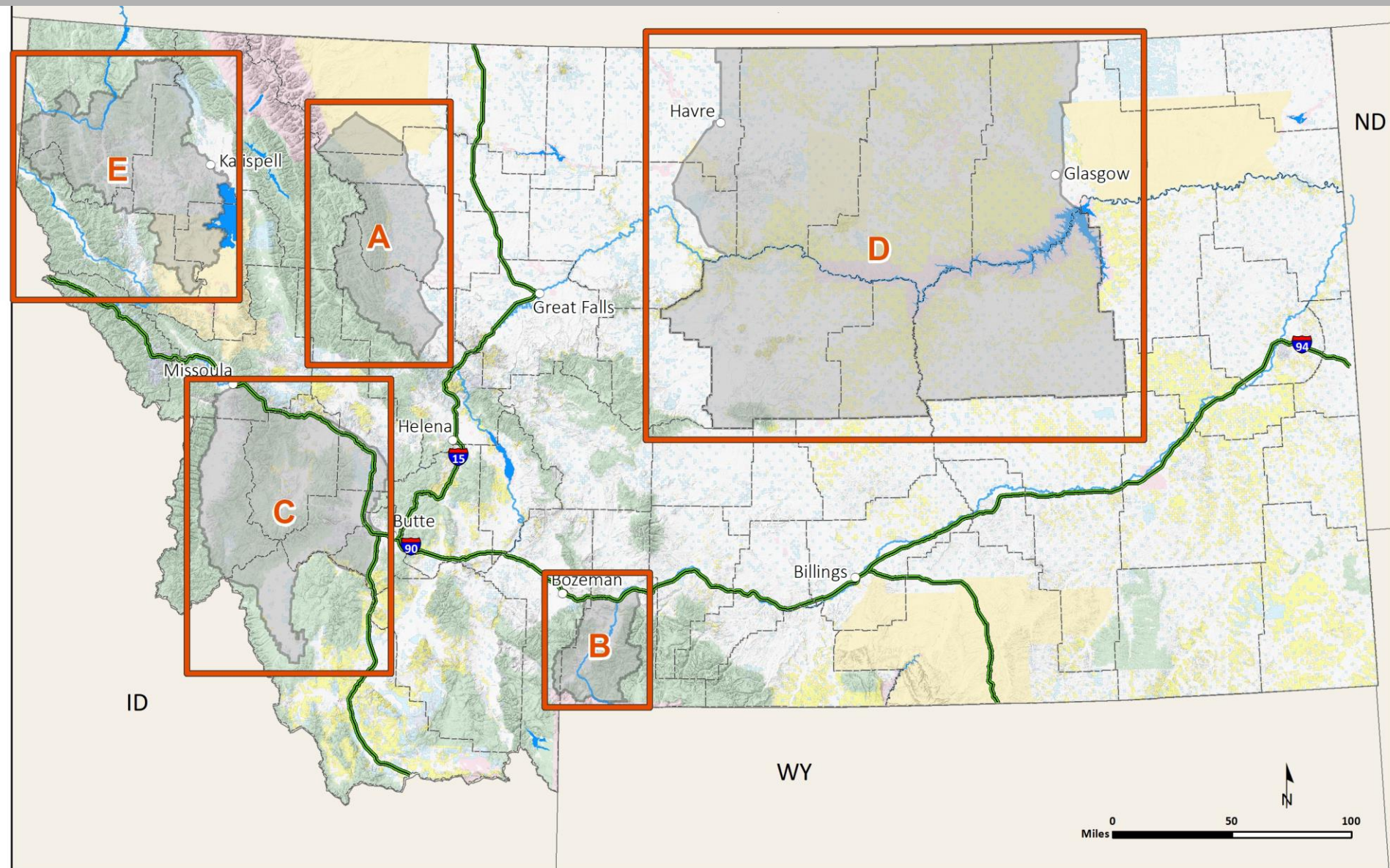
# Conserving Habitat and Improving Landscape Permeability

- Conserving habitat through fee title/conservation easements
- Managing forage on seasonal and migration ranges (e.g., weed treatments)
- Managing habitat for migratory birds
- Removing or modifying fences
- Reducing human-wildlife conflicts
- Land-use and transportation planning





# DOI Secretarial Order 3362



# FWP Wildlife Movement and Migration Strategy: Vision

- Permeable network of habitat
  - Public and private lands, where people live, work, and recreate
  - Initial focus: ungulates, carnivores, birds
- Collaborative efforts to facilitate wildlife movements
  - Mitigate negative impacts
- Locally-led, private-public partnerships
  - Voluntary and incentive-based



Jason Kool





# FWP Wildlife Movement and Migration Strategy: Actions

1. Strengthen FWP organizational structure to improve coordination.
2. Develop communications and engagement plan.
3. Prioritize research and mapping of ungulate, carnivore, and bird movements.
4. Incorporate movement and migration more explicitly in FWP habitat programs.
5. Work collaboratively to inform land use, recreation, mining and energy, community and economic development, and transportation planning.
6. Explore options to create dedicated funding.
7. Work with partners.



# Remaining Engagement

- Private landowner interests and engagement
- Engaging all of the NGOs that want to be involved

