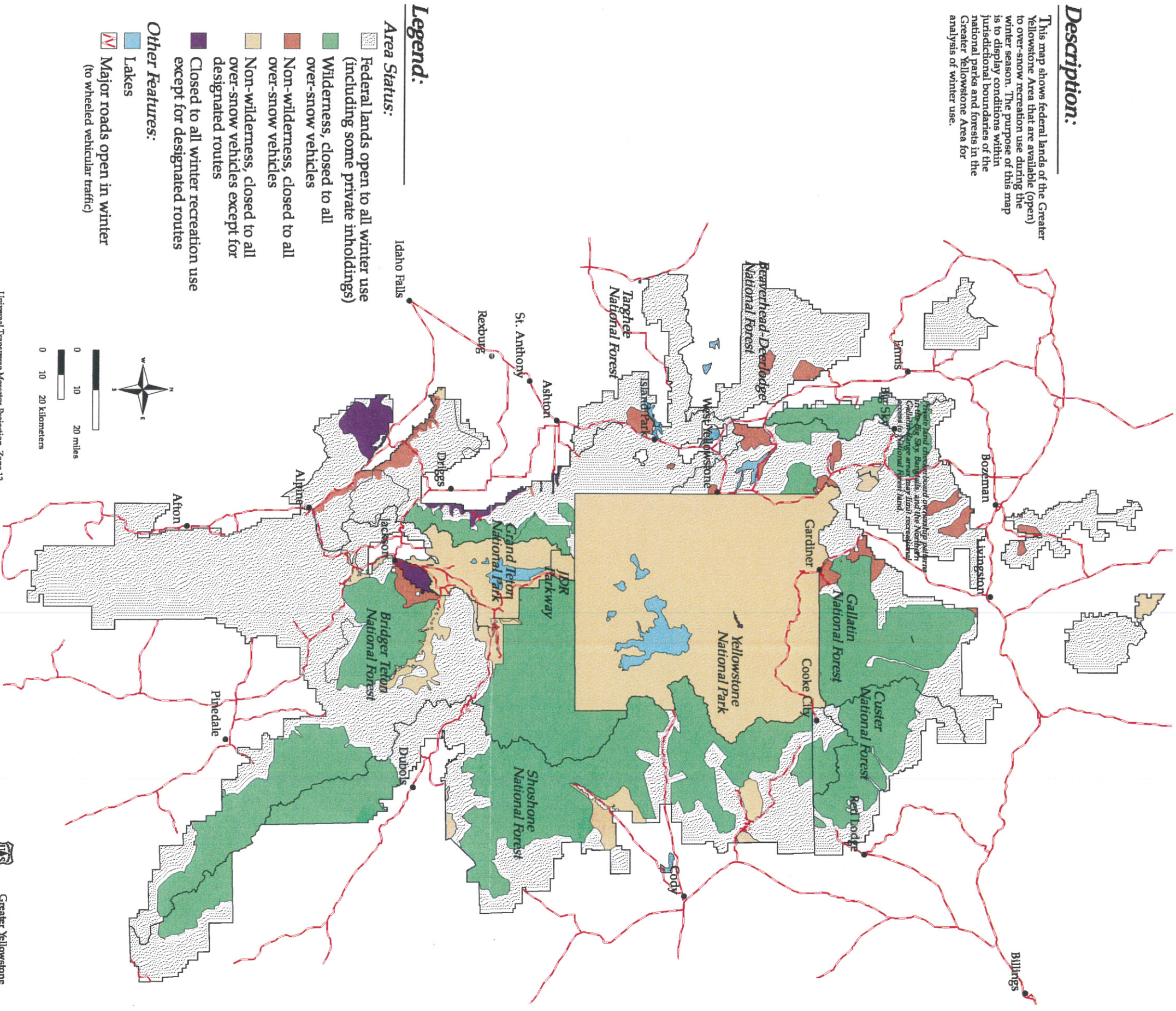


# Lands Open to Winter Use

## Description:

This map shows federal lands of the Greater Yellowstone Area that are available (open) to over-snow recreation use during the winter season. The purpose of this map is to display conditions within jurisdictional boundaries of the national parks and forests in the Greater Yellowstone Area for analysis of winter use.



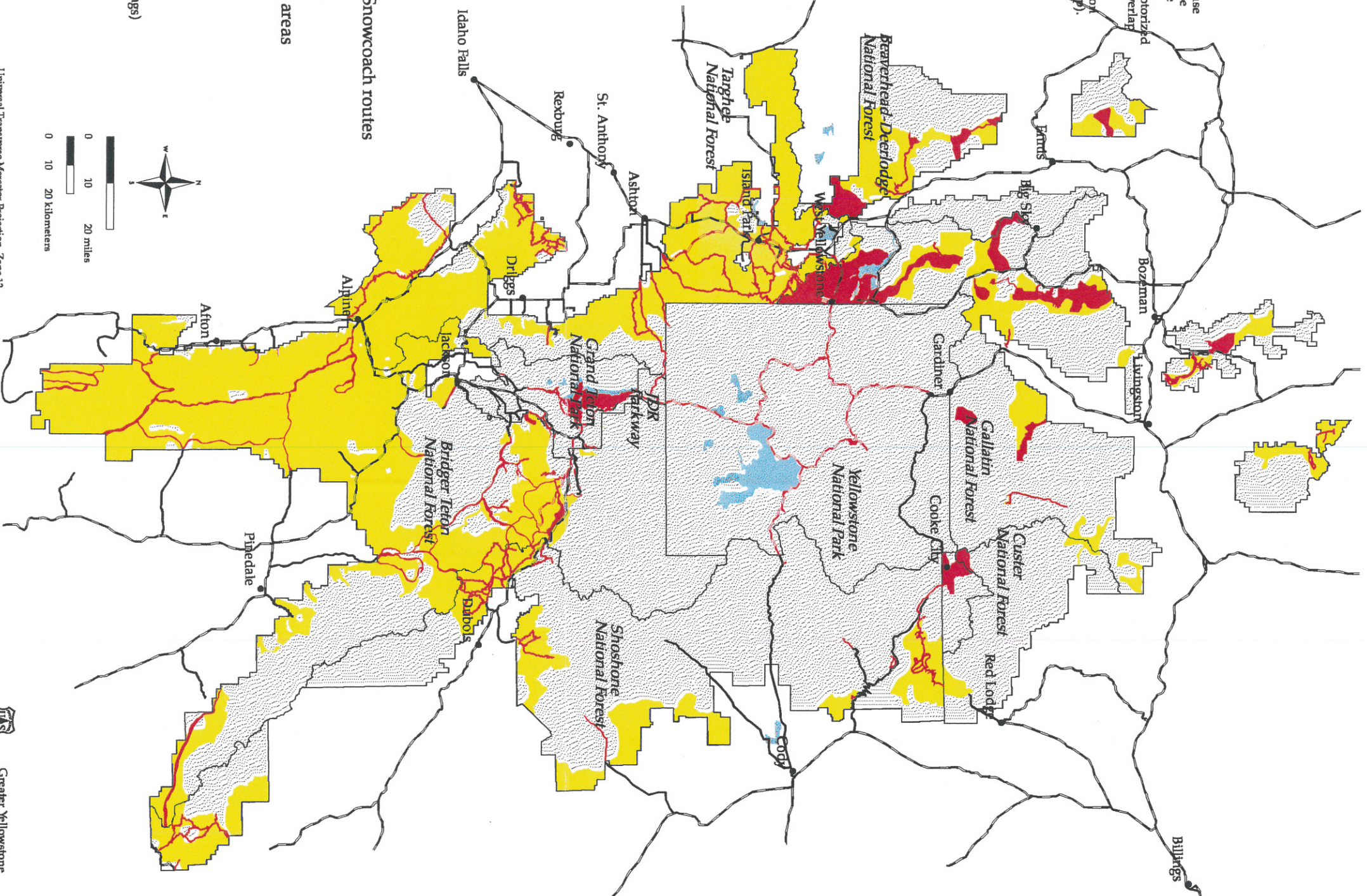
Universal Transverse Mercator Projection, Zone 12  
Thematic information derived from USGS base maps, various scales.



# Terrain Currently Used by Motorized Use

## Description:

This map shows where motorized winter use is currently occurring on federal lands of the Greater Yellowstone Area. Notice that some motorized uses overlap with nonmotorized uses (see Terrain Currently Used by Nonmotorized Use and Visitor Use Issues maps). These overlap areas are where decisions by managers may be needed to ensure quality visitor experiences. Motorized use is also allowed on some non-federal lands (white areas on map).



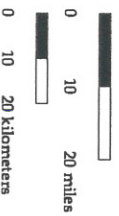
## Legend:

### Current Activity Types:

- Primary Roads
- Scenic Roads
- Groomed Snowmobile / Snowcoach routes
- Snowmobile routes
- Backcountry snowmobile areas

### Other Features:

- Federal lands (including some private inholdings)
- Lakes



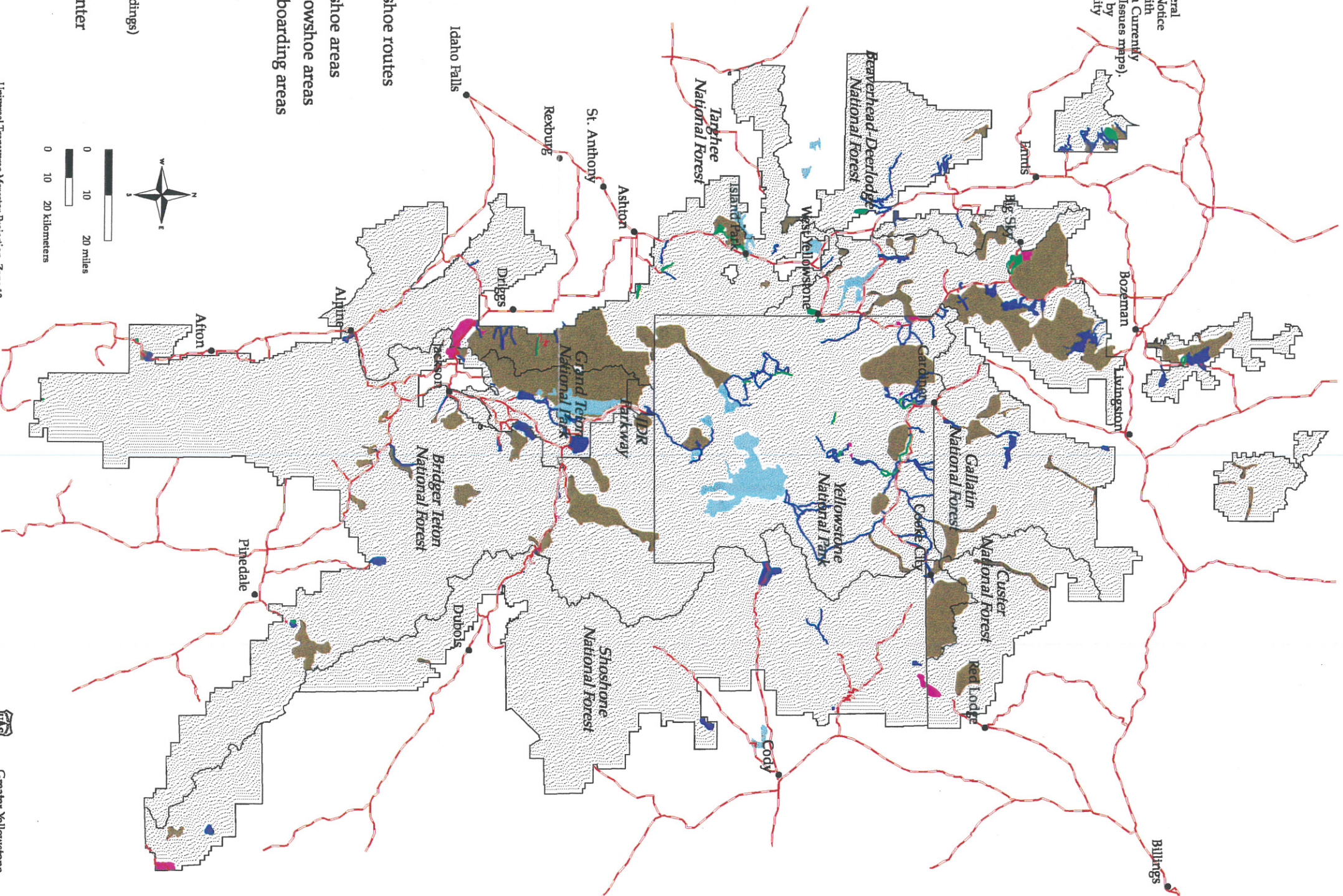
Universal Transverse Mercator Projection, Zone 12  
Thematic information derived from USGS base maps, various scales.



# Terrain Currently Used by Nonmotorized Use

## Description:

This map shows where nonmotorized winter use is currently occurring on federal lands of the Greater Yellowstone Area. Notice that some nonmotorized uses overlap with motorized uses (as shown on the Terrain Currently Used by Motorized Use and Visitor Use Issues maps). These overlap areas are where decisions by managers may be needed to ensure quality visitor experiences. Non-federal lands (white) may be available for use.



## Legend:

### Current Activity Types:

- Groomed ski trails
- Ungroomed ski / showshoe routes
- Groomed ski areas
- Ungroomed ski / snowshoe areas
- Backcountry skiing / snowshoe areas
- Downhill skiing / snowboarding areas

### Other Features:

- Federal lands  
(including some private inholdings)
- Lakes
- Major roads open in winter  
(to wheeled vehicular traffic)



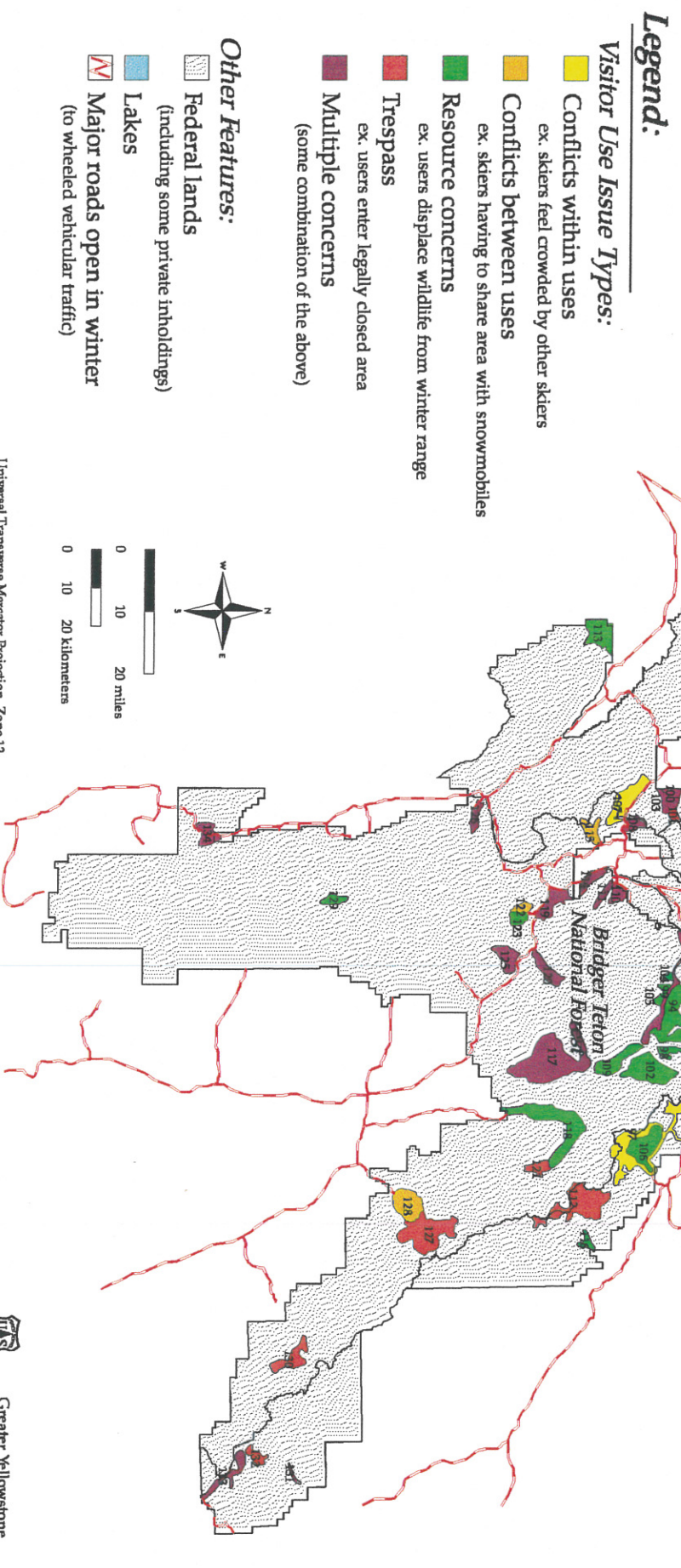
Universal Transverse Mercator Projection, Zone 12  
Thematic information derived from USGS base maps, various scales.



# Visitor Use Issues

## Description:

This map shows Winter Visitor Use Issues on federal lands of the Greater Yellowstone area. Four types of issues are displayed: social conflicts within uses, social conflicts between uses, resource concerns, and trespass concerns. These issue areas highlight places where management decisions may be needed to ensure quality visitor experiences or to protect sensitive natural resource areas.

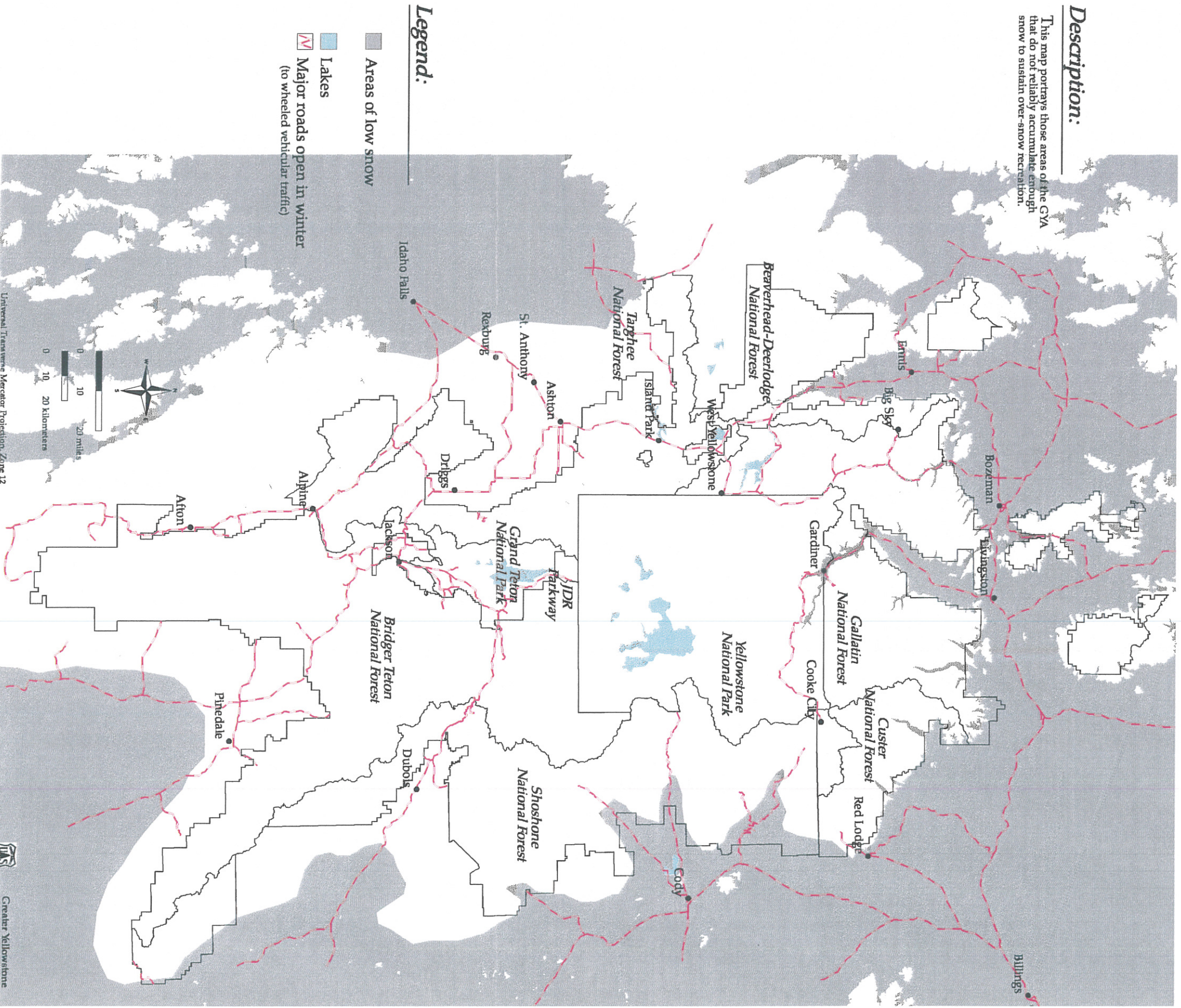




# Low Snow Areas

## Description:

This map portrays those areas of the GYA that do not reliably accumulate enough snow to sustain over-snow recreation.



## Legend:

- Areas of low snow
- Lakes
- ▭ Major roads open in winter (to wheeled vehicular traffic)

Universal Transverse Mercator Projection, Zone 12  
Thematic information derived from USGS base maps, various scales.

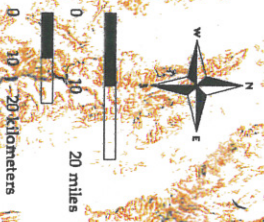
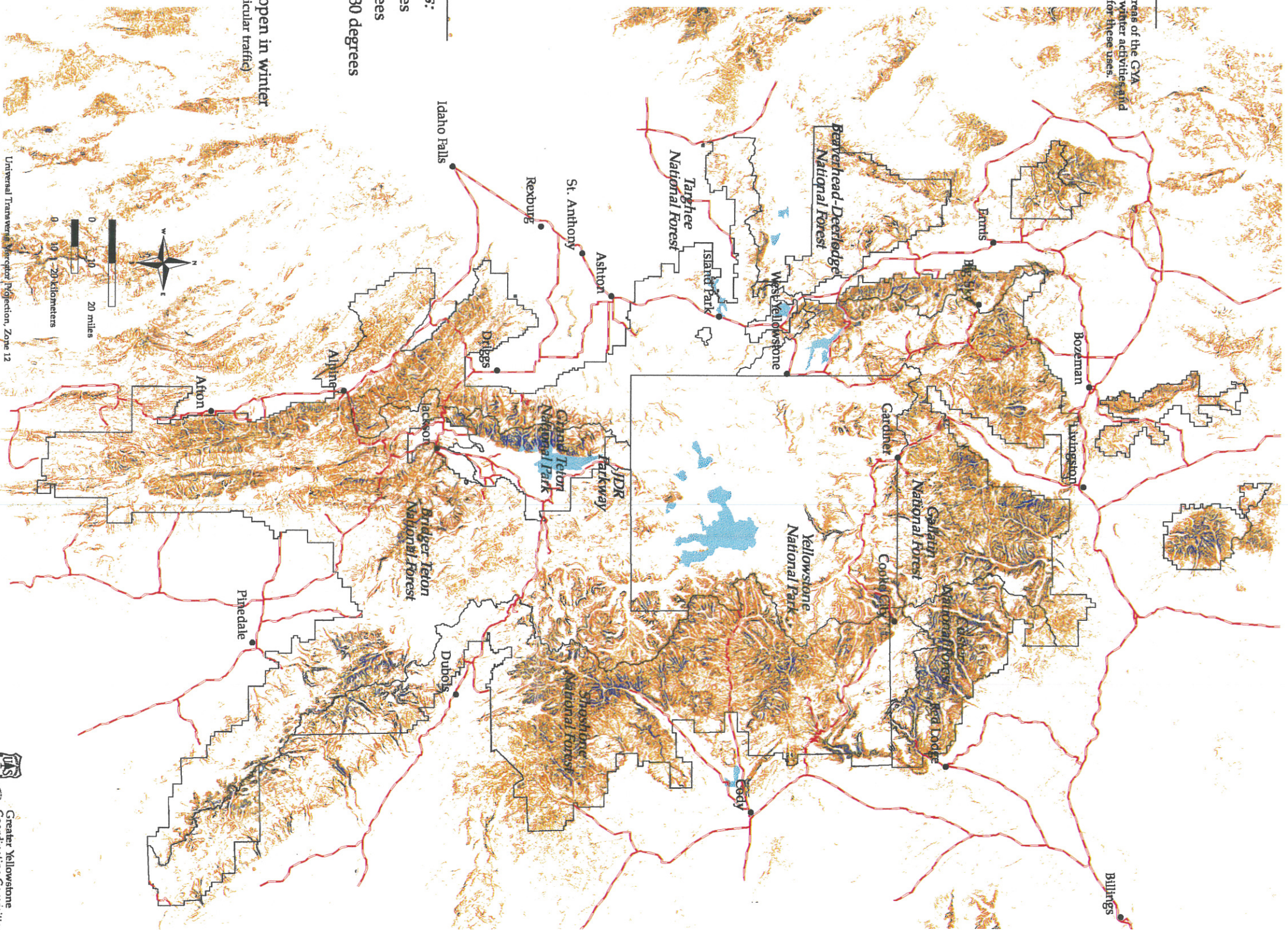


# GYA Slope Map

## Description:

This map portrays those areas of the GYA that are too steep for most winter activities and are, therefore, unavailable for these uses.

- Legend:**
- Slope Categories:**
- 0 to 15 degrees
  - 15 to 30 degrees
  - greater than 30 degrees
- Other Features:**
- Lakes
  - Major roads open in winter (to wheeled vehicular traffic)



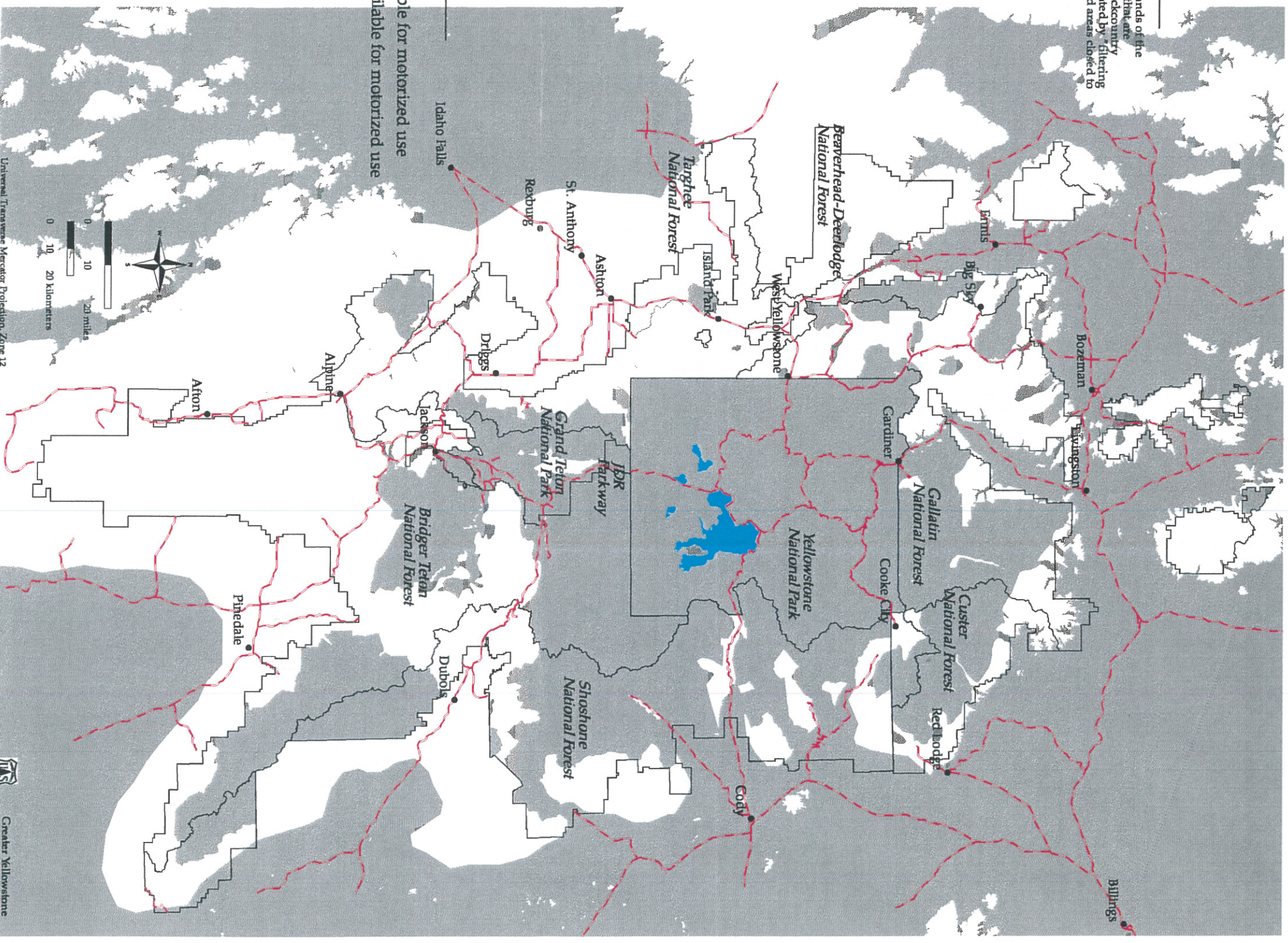
Universal Transverse Mercator Projection, Zone 12  
Thematic information derived from USGS base maps, various scales.



# Terrain Potentially Available For Motorized Use

## Description:

This map shows federal lands of the Greater Yellowstone Area that are potentially available for backcountry motorized use. It was created by "filtering out" areas of low snow and areas closed to over snow motorized use.



## Legend:

- Lands available for motorized use
- Lands unavailable for motorized use

Universal Transverse Mercator Projection, Zone 12  
Thematic information derived from USGS base maps, various scales.



# Terrain Potentially Available For Nonmotorized Use

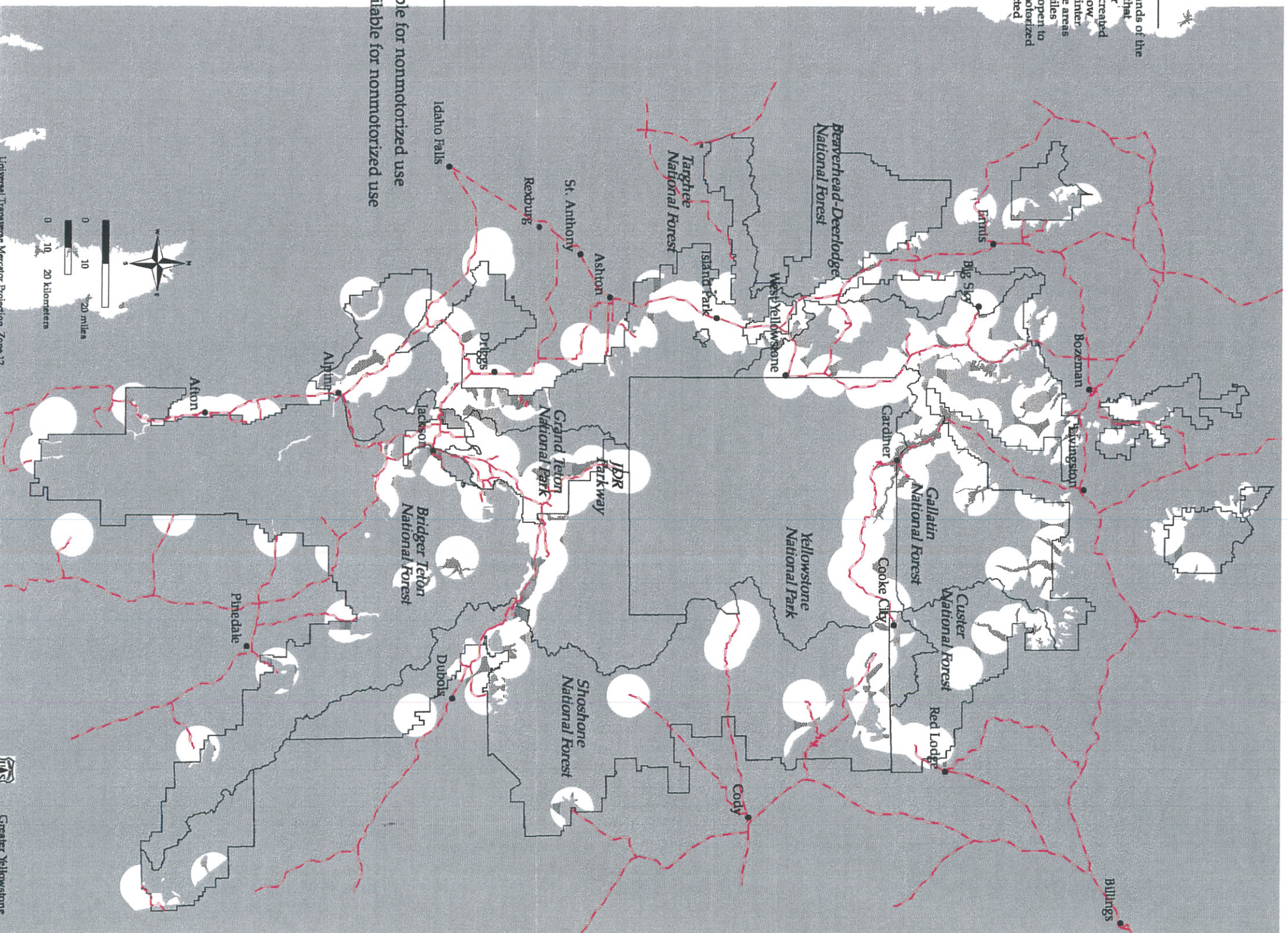
## Description:

This map shows federal lands of the Greater Yellowstone Area that are potentially available for nonmotorized use. It was created by "filtering out" areas of low snow, areas closed to all winter use, existing motorized use areas and areas greater than 5 miles from an existing trailhead open to wheeled vehicles. Note: motorized routes may cross the depicted available areas.

## Legend:

### Area Types:

- Lands available for nonmotorized use
- Lands unavailable for nonmotorized use



Universal Transverse Mercator Projection, Zone 12  
Thematic information derived from USGS base maps, various scales.



# Analysis Results

## Description:

This map portrays the analysis results for winter recreation use on federal lands of the Greater Yellowstone Area. The map is comprised of Potential Opportunity Areas, the types of use recommended for in a given area (for more detail about activities permitted in each, see the written Potential Opportunity Area descriptions). *These areas represent where an activity is available and not where it will actually take place.* This analysis is only one possible allocation of winter recreation management across the Greater Yellowstone Area.

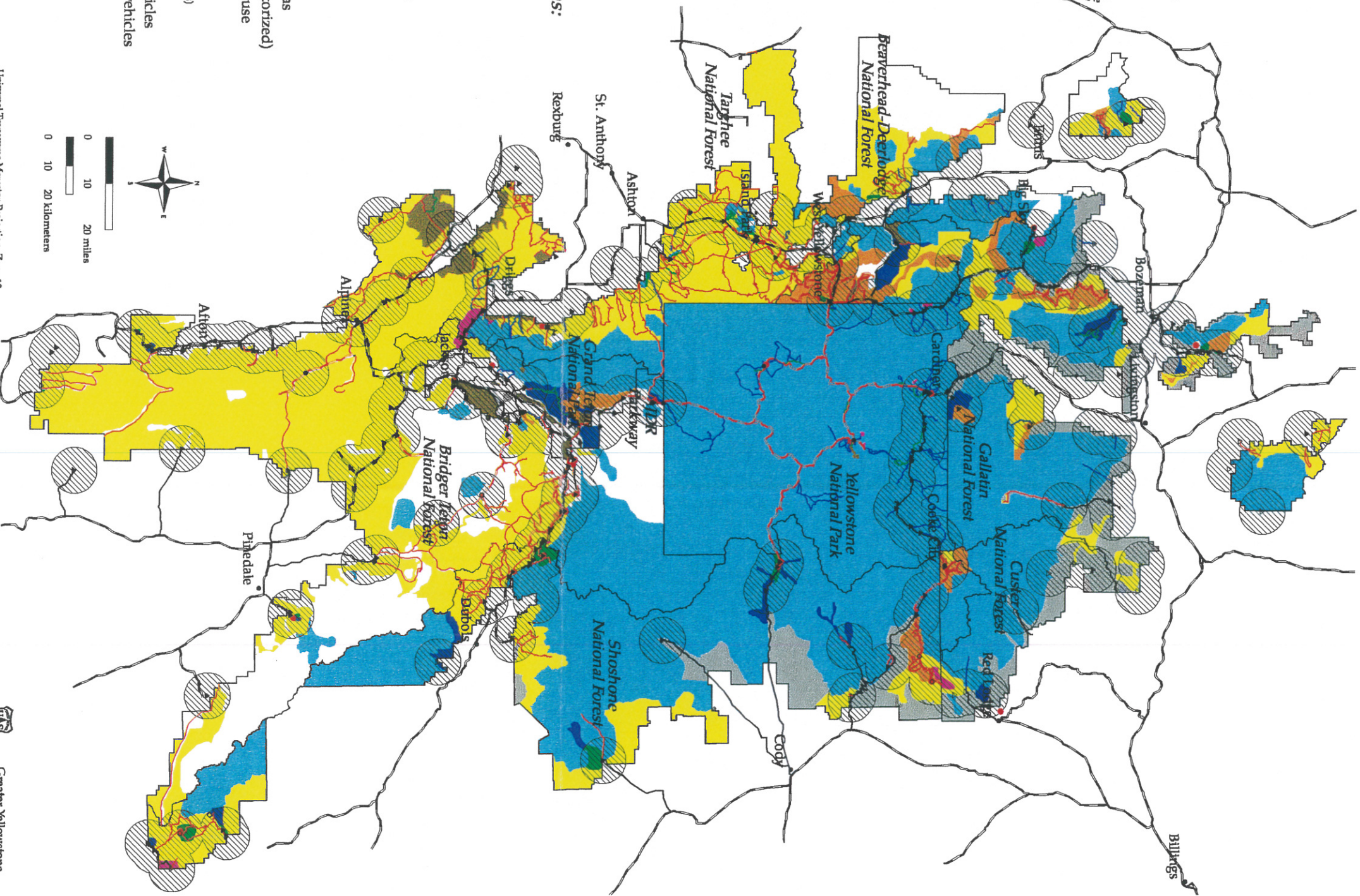
The following criteria (goals) were used to develop these analysis results:

- resolve user group conflicts
- provide as wide a range of opportunities as possible within an hour or so of population centers
- protect wildlife winter range
- resolve conflicts with threatened and endangered species
- resolve air quality, sound, odor degradations
- maintain wilderness integrity
- remain true to agency missions
- provide a full range of experiences within the Greater Yellowstone Area
- avoid/minimize impacts to resources and/or areas of particular concern (thermal areas, tree plantations, etc.)

## Legend:

### Potential Opportunity Areas:

- Population centers
  - Destination areas
  - ▮ Primary transportation routes
  - ▮ Scenic driving routes
  - ▮ Groomed motorized routes
  - ▮ Motorized routes
  - ▮ Groomed nonmotorized routes
  - ▮ Nonmotorized routes
  - ▮ Groomed motorized areas
  - ▮ Backcountry motorized areas
  - ▮ Groomed nonmotorized areas
  - ▮ Nonmotorized areas
  - ▮ Backcountry nonmotorized areas
  - ▮ Downhill sliding areas (nonmotorized)
  - ▮ Areas of no winter recreational use
  - ▮ Low-snow recreation areas
  - ▮ Areas within 5 mi of trailheads (trailheads accessible by wheeled vehicles)
- Types of Trailheads:
- ▾ Existing, plowed - wheeled vehicles
  - ▾ Existing, unplowed - wheeled vehicles
  - ▾ Existing oversnow
  - ▾ Potential oversnow
  - ▾ Potential trail head



Universal Transverse Mercator Projection, Zone 12  
Thematic information derived from USGS base maps, various scales.